

The Washington News

Washington GT Magnet Elementary School ♦ 1000 Fayetteville Street ♦ Raleigh, NC 27601 ♦ 919-856-7960

December 2008 Edition

From your PTA Leadership

Welcome back from the holiday break! We hope you all had an enjoyable Thanksgiving with family and friends. Now take a deep breath because these few weeks of school before our next break will no doubt be busy, busy, busy!

Before you read about what's coming up, let's take a brief look at November and Math and Science Night: WOW! What a great event! Many thanks to Lynn Lang and Peggy Peyton, co-chairs this year for Math and Science Night. They brought us some wonderful presenters and an excellent hands-on learning experience. We also thank all of the parents who volunteered that night! Some parents helped sell pizza, worked in classrooms with presenters, helped at the Book Fair, and assisted in the clean-up at the end of the night. This event CANNOT happen without parents coming out to help. A huge thank you to those who volunteered that night!

This month, many of our classes will host special centers as Winter Break approaches. Please keep an eye out from your Room Parent about ways you can help. Volunteers and materials will be needed.

Please do what you can to help with these special events and activities. Our students will have a lot of fun learning and the teachers will be very appreciative.

January and February promise to be busy months too. In January, some of our 4th and 5th graders will perform "Willy Wonka Jr.!" There will be three daytime performances and one evening performance. Look for the article in this newsletter for specific dates and times. Then in February, it's Science Fair! We'll need many volunteers for this large event! Read all about Science Fair in this newsletter and watch for more information over the coming weeks.

Finally, we wish you all a safe and happy Winter Break. Enjoy the time with those you love, relax and have a Happy New Year! We look forward to seeing you back in January 2009!

Lynn Edmonds, PTA President
lsept@nc.rr.com (859-5260)

Kay Brody, PTA President-Elect
Kay.brody@gmail.com (462-1936)



Newsletter Information

Would you like to see your information printed in the January 5th edition of the newsletter? Just send your articles/pictures by **December 29th** to Ann Overton at aoverton@aoassociates.net. Editing for space/content may occur. Thanks for contributing!

Inside this issue:

Upcoming Events	2
Holiday Magic	3
WES Hoodies for Sale	3
The Arts at WES	3
BoxTops Marketplace	4
Science Fair Committee	4
Volunteer Message	5
Bus Info	5
Character Ed	6
Reading Programs	6
CREATE programs	7
Calendar & Contacts	8

PTA BREAKING NEWS

PTA Board Meeting Tomorrow!

Not just for board members! Our monthly meeting will be held tomorrow morning, December 2nd, at 9:30am in the conference room on the main hall of the school building. Any PTA member is welcome and encouraged to join us. Our meetings are held on the first Tuesday of every month.

Gift Giving Policy

WashinGTon observes the gift-giving policy set forth by the Wake County School Board. That policy reads as follows: *School employees shall not accept any gifts except token gifts of insubstantial value.* Please respect this as we enter the gift-giving season. However, if you would like to show the holiday spirit of giving, you may ask your student's teacher to supply a list of classroom items that are needed and purchase items from that list. Thank you!



Upcoming Events



Spirit Night @ Jellybeans

THURSDAY, DECEMBER 4th

6:00 — 8:00 PM

Our next Spirit Night will be a skate night hosted by Jellybeans on Thursday, December 4th from 6:00 pm-8:00 pm. Admission is \$4.50 per person which includes regular skate rental; however, in-line or speed skates are \$1.00 extra. You may also bring your own skates. Although no food or drinks can be brought into the building, the Snack Bar will be open for your convenience. So, save the date and join your friends for another great Spirit Night! Any questions? Feel free to contact Cheryl Rodgers at crodgers@nc.rr.com



*****Please note: The date has been changed to prevent a conflict with the band concert.*****

Musical at Washington!

Washington Arts Staff is proud to present the Broadway, Jr. version of Roald Dahl's "Willy Wonka, Jr." This Junior Broadway adaption of Roald Dahl's book, "Charlie and the Chocolate Factory" uses elements of the book and both hit movies. Eighty Washington fourth and fifth graders have been hard at work in elective classes (Theater Production, On Stage with Music, Dance Ensemble and Behind the Scenes) to bring this great story to life. *Pure Imagination*, *The Candy Man*, and *The Oompa-Loompa Song* are just a few of the magical, musical numbers in the show!



Show dates are January 13th, 14, and 15th daily at 2PM. Also 2PM and 7PM on the 15th in the Washington Media Center. Admission is free!



Have You Joined the Washington PTA?

Thank you to the many parents and staff who have already sent in their membership forms. If you've been planning to join but haven't gotten around to it, now is the time to join. Just \$5 gives you voting privileges and a voice in the direction of our school's PTA. Go to the school website and click on PTA/Membership to download a form & to see a current list of members. Membership cards are sent home with your child so watch for them in the Monday Folder. If you need a membership form sent to you or have any questions, please contact Julie Zimmerman at juliez@nc.rr.com or call 803-8421.

NEW THIS YEAR: HOLIDAY MAGIC ANGEL GIFTS

It is Never too Late to Celebrate the Holidays by Helping Others in our WashinGTon Community

This year, Holiday Magic becomes Holiday Magic Angel Gifts, hoping to spread cheer to more WashinGTon students through a single gift-giving program coordinated by the PTA. Our school counselors Ms. Sculati and Ms. King work with staff to identify families within our WashinGTon community who may need a little extra help this holiday season. We then ask sponsors to contribute by purchasing just one gift for a specific student based on "gift



wish lists" compiled by their parents and teachers. The process is completely anonymous and completely fun!

Sponsors will purchase a toy using the child's "wish list" as a guide, with a recommended value of \$20 to \$25 per child. Details on how to tag the wrapped gift and on when and where to deliver it will be provided when you are assigned a child. To provide a gift for one or more children, contact Christy Martschenko through email at cmartschenko@nc.rr.com.

WIZARD WEAR HOODIES AVAILABLE!

Due to many requests, the PTA is offering hoodies for sale. These are available as pre-orders only. They are available in navy or gray with the Washington logo on the front; cost is \$17.00 each (adult 2XL or 3XL are \$18). You should have received an order form in your child's Monday Folder recently. If you would like to order a Washington hoodie for you or your child, please contact Tonya Finney at 608-8972 or tfinney226@yahoo.com. IMPORTANT: If you want to receive your hoodie(s) before the Holiday Break, you MUST place your orders by Friday, December 5th! Payments must be made with pre-order; checks payable to "Washington PTA".

Making a difference...one story at a time!

Diane Macklin, storyteller and certified educator will be at Washington on Dec 5 for two performances. The 3rd - 5th graders will attend a 1:00 pm performance and the K-2nd grades will attend at 2:00 pm. Please join us for an interactive and entertaining storytelling program which specializes in character education through cultural stories.



Shopping online for Christmas? Go to Boxtops Marketplace and earn CASH for our school!

You need to shop for Holiday Gifts! Our school needs classroom supplies on a regular basis! We can earn **cash** for our school simply by purchasing these items through the Box Tops for Education website at www.btfе.com.

Here's how it works:

1. Sign up to support our school

Sign up at www.btfе.com

2. Shop online

Start each shopping trip at www.btfе.com/marketplace and click the link to the online store of your choice....and shop as you normally do. By starting at www.btfе.com, Box Tops can track earnings and automatically credit our school's account.



3. Our school earns cash

A percentage of every qualifying purchase is automatically donated back to our school!

Shop over 70 favorite stores such as: JCPenney, Target, Gap, Old Navy, Pottery Barn, Wal-Mart, Barnes & Noble, Circuit City, Office Depot, Office Max, Oriental Trading Company, Staples, Best Buy, Land's End, Limited Too, and Kohl's just to name a few!

Go on-line today and check it out!

Ask me, Becky Wiles, for help or more information, twiles@nc.rr.com or 650-1534.

Washington GT Magnet Science Fair Planning Committee Needs YOU!

The Washington GT Magnet Science Fair will be taking place February 4th and 5th, 2009...and the planning committee needs volunteers to help in a variety of roles to make this program successful for all of our "Science Wizards!" We will be having a planning meeting early in January, 2009 and further details will be sent out via email.

If you are interested in helping to "grow" our students interest in science-contact Elyse Newkirk, sciencemom4@gmail.com (919-341-5267) 2008-2009 Science Fair Committee Chair, or Julie Osborne, Julie_osborne@ncsu.edu assistant chair. We look

Volunteers are needed in some of the following areas:

- Judge recruitment
 - Volunteer coordinator
 - Assisting Judges on day of fair
 - Hospitality for volunteer judges
 - Data entry
 - Assisting with exhibit check in
 - Set up/Clean up
 - Publicity
- And much more!*



Volunteering



A WORD ABOUT VOLUNTEERING

Our school is enhanced by many events that take place outside school hours. Some of those events, such as Fall Picnic and Math and Science Night are at risk of being discontinued due to a shortage of volunteers. Attendance at these events has been consistently strong, which leads us to believe that Washington families want us to continue hosting them. That is exactly what we want to do, but we truly need your help.

We in the PTA are working on how we solicit parent volunteers, and thinking about what we can do better. What prevents some of you from volunteering? Is it time? Distance? Schedule conflicts?

We KNOW many parents live far from the school. However, those of us who chose WashinGTon for our children need to think of this place as our neighborhood school. It is our school, along with the many families who do live in its neighborhood. We are a community and we can work together for our students.

That addresses the obstacle of "distance". What about the obstacles of "time" or "scheduling conflicts"? Of course many of our families have two working parents. We are acutely aware of that. We ask, however, of those of you who work, to please consider volunteering once per school year at an after hours event. If all of our working parents, moms and dads, volunteered at just one such event during the school year, we could easily continue hosting them.

Our school certainly has some wonderful parents who consistently give their time and volunteer a lot. We thank you all so very much; the PTA doesn't just thank you, the staff and the students thank you too! You do not go unnoticed and this article is not aimed at getting you to do more.

We want to diversify our volunteer pool. We want to bring new parents into the mix. Please help us do that. If you have not volunteered at an event yet, the second semester of school will offer MANY opportunities! Watch for ways to get involved early in 2009 and help us continue the many events we all seem to enjoy!

Thank you,
Lynn Edmonds, PTA President
lsepta@nc.rr.com
859-5260



Bus Information



Who to Call With Bus Questions?

As a magnet school, Washington has over 20 bus routes serving our families! Your patience has been appreciated as the beginning of the school year glitches have been worked out. Most bus routes are now stabilized and running their regular routes in a timely manner.

If you have questions regarding routes, times, drivers, etc., please contact the transportation office in charge of that route. Their numbers listed in the chart to the right.

If your concerns deal with student behavior on the bus, please contact our Administrative Intern, Kathy Livengood (klivengood@wcpss.net), or Interim Principal, Dr. Rebecca Viersen (rviersen@wcpss.net).

As a reminder, students are no longer allowed to ride a bus home with a friend. Students may only ride the bus to which they are assigned. The principal no longer has the authority to allow a student to ride another bus.

Office	Routes	Telephone
Apex	Squirrel	387-2230
Broughton	Alligator, Bear, Cow, Dinosaur, Dolphin, Ladybug, Penguin, Tiger, Cat, Rabbit, Butterfly, Robin	856-7821
Cary	Frog, Duck, Turtle	460-3517
Garner	Puppy, Whale	662-2408
Green Hope	Owl, Falcon	380-3690
Southeast	Elephant	856-2828

★ Reading Programs ★

BOOKS & BEYOND (K-1)

The students in kindergarten and first grade are reading like crazy! Well over half of them had turned in one or more reading logs before Thanksgiving Break, Two first graders have already turned in their tenth logs, and their pictures are posted on the Media Center wall near the bulletin board. Check out your child's progress the next time you're at school.



Students have an opportunity to pick up a new reading log each time their class visits the Media Center. Logs can also be printed from the Media Center page of the school website at washingtontes.wcpss.net. Holiday breaks are a great time to read! Remember to pick up an extra log or two before Winter Break begins!

BOOK ADVENTURE (2nd- 5th)

A total of 97 students reached the first quarter point goal for **Book Adventure**. These students received a colorful shoe charm and a coupon for a free Wendy's frosty treat. To be eligible for the first quarter incentive, points must have been earned between September 23rd and November 12th. The breakdown by grade is as follows:



Mr. Strickland's class had the most students to reach the goal as well as the most total points... 29,540! Way to go!

If you didn't make the first quarter goal, you've got plenty of time to reach the next one. The second quarter deadline will be mid-January (exact date will be announced later). Second and third graders will need to have accumulated a total of 800 points, and fourth and fifth graders will need 1200 points to earn the second quarter incentive... a trip to the **Book Adventure** store.

2 nd grade	Goal 400 pts	32 students
3 rd grade	Goal 400 pts	38 students
4 th grade	Goal 600 pts	5 students
5 th grade	Goal 600 pts	23 students

Students can check their progress online at any time. Just go to www.bookadventure.org and log in, then click Reports on the menu at the left. Quiz scores will be listed in order by the dates they were taken. Simply total the points you've earned since September 23rd to see if you have enough to meet the goal.

★ Character Education ★



SPOTLIGHT ON CHARACTER

*Here's how our own Washington Wizards showed Novemer's character trait, **COURAGE**...*

- *K- Hannah stood up for a friend who was being picked on
- *1st- Abby overcame her fear and asked a salesperson for something
- *2nd- Aaliyah answered honestly about something she'd done wrong, even though she knew she would be in trouble
- *3^d- Cameron went down a dark street with his Dad to get help when his family's car battery died
- *4th- Mikala led a prayer in front of the whole church congregation
- *5th- Anna bravely endured having 16 stitches put in her leg

BOOK ADVENTURE TITLES ARE NOW MARKED ON THE CHARACTER REWARDS BOOK LISTS! LOOK FOR BOOKS ABOUT SHOWING KINDNESS WHEN YOU GET YOUR DECEMBER FORM.

Washington students show **COURAGE** in so many different ways. These are only a few examples. If you haven't told us how you showed **COURAGE**, we want to hear from you! Character Rewards forms for **COURAGE** may be submitted through Wednesday, December 10th.

THE CHARACTER TRAIT FOR THE MONTH OF **DECEMBER IS KINDNESS**. SHOW US HOW YOU SHOW IT!

Wake to Wellness CREATE Update: Jump and Dance into the New Year!



The John Rex Endowment, Wake to Wellness grant program will be **CREATING** more opportunities for students to continue to jump, dance and climb their way to a lifetime of fitness and wellness!

For those families new to Washington GT Magnet, the **CREATE** grant has funded \$10,000 per year for three years (beginning in 2007-2008 school year) for fitness and wellness programs at Washington GT Magnet. **CREATE** stands for, "Climbing, Running, Energizers, Activities...Training and Equipping our students for a lifetime of health and wellness!

Beginning December 10th, 2008 the **CREATE** Jumprope Club will meet each **Wednesday morning from 8:00 a.m. to 8:40 a.m.** This is a *great way to start your day!* All students, teachers and parents are welcome and encouraged to attend! The club calendar is listed below. Parents and guardians should be receiving a release for your child's participation in this activity in your Monday folders.

Dec. 10, 17,

Jan. 7, 14, 21, 28,

Feb. 4, 11, 18, 25,

Mar. 4, 11, 18, 25

Apr. 1, 15,

There will be also be a performance in April with the date To Be Decided.

Teachers working with the Jumprope club this year are: Ms. Jamie Mewborn, Ms. Mercedes Leonard, and Ms. Lynn Bitting.

Our **dance program** will also be taking place again this year as well-and we are excited to have Ms. Melanie Dale, owner of Step To Gold International Ballroom School, instructing our teachers and students. Dance sessions will take place on Thursdays at Washington in the Dance Studio from 4:00-5:00p.m.



The dates for instructor (only) training are:

- Dec. 4, 11
- Jan. 8, 15, and 22

The **Ballroom Dance club** will be held on the following dates and all 3rd, 4th and 5th graders are encouraged to take part in this fun social, skill-building activity!

- Jan. 29
- Feb. 5, 19, 26
- Mar. 12, 19, 26
- Apr. 16

In addition, a spring performance will be take place at Washington GT Magnet Washington for all club members, date TBA. All returning students will *also* perform at Step To Gold International Ballroom on the 19th or 26th of April. This will be motivation for continuing students, and something for the new participants to look forward to! So get your dancing shoes ready! We have some great upcoming opportunities to gain skills and fitness, and to showcase our club to others!

If you have any questions, please contact Lynn Bitting, Washington GT Magnet Physical Education Instructor, lbitting@wcpss.net or Julie Nettifee Osborne, PTA Outside Grants Committee Chair, Julie_chris@bellsouth.net.

PTA Returned Check Policy

WashingTon's PTA policy is that check writers will be held responsible for any and all fines charged to the PTA for checks returned for any reason- including NSFs.

Washington Events Calendar

DECEMBER

TH 4 Spirit Night at Jellybeans
 TH 11 Band Concert 7:30 to 8:15 pm
 T 16 Strings Concert 7-8:20 pm
 M 22 — Th Jan 1 Holiday

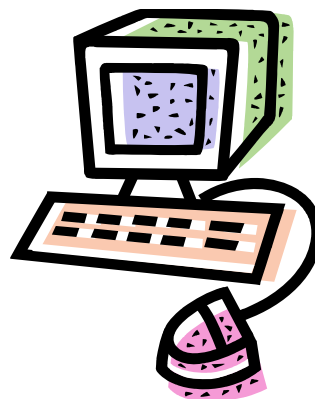
JANUARY

T 13— Th 15 Willy Wonka, Jr.
 M 19 Holiday
 F 23 End of Quarter

WASHINGTON WEBSITE

www.washingtontes.wcpss.net/PTA help us keep you informed find details on programs and events as well as:

- ★ Options to contact PTA committees (contact pg)
- ★ Email updates on WPTA & school happenings (sign up for yahoo mail)
- ★ Online Newsletter (click on the Newsboy)



For More Information, Contact...

PTA Office	Contact Name	Phone	Email Address
President	Lynn Edmonds	859-5260	lsepta@nc.rr.com
President-elect	Kay Brody	462-1936	Kay.Brody@gmail.com
Past President	Helen DeFazio	362-0510	hdefazio@earthlink.net
Secretary	Jennifer Wakeford	387-8024	jswakeford@yahoo.com
Treasurer	Carolyn Waldrup	342-0120	cadawald@yahoo.com
2nd VP-Ways & Means	Christy Flint	557-8312	christy.flint@gmail.com
3rd VP-Communication & Recogni-	Laura Kay	388-0294	jkaylkay@hotmail.com
4th VP-Community Support	Barb Campbell	363-3478	barbcampbell@nc.rr.com
5th VP-Media Center	Angela Sims	772-6689	aosims@yahoo.com
6th VP-Programs	(Position Open)		
7th VP-School Support	Dorothy Roche	854-9806	dwroche@bellsouth.net
School Administration	Contact Name	Phone	Email Address
School Principal	Peggy Beasley-Rodgers	856-7960	PBEASLEY-RODGERS@wcpss.net
Assistant Principal	Becky Viersen	856-7960	rviersen@wcpss.net
Faculty Rep/Elective Information	Jan Kidwell	856-7960	jkidwell@wcpss.net