



The WashinGTON News

Washington GT Magnet Elementary School ♦ 1000 Fayetteville Street ♦ Raleigh, NC 27601 ♦ 919-856-7960

January 2009 Edition

From your PTA Leadership

Welcome back from Winter Break and Happy New Year! We hope all of you had a joyous, happy time with family and friends. The first half of the school year was certainly busy and this half of the year will be too. We're kicking off 2009 with two big events:

First, please plan to come and see Washington's production of "Willy Wonka Jr." January 13th, 14th and 15th. There will be a 2:00pm performance each of those dates, plus an evening performance on January 15th at 7:00pm. These productions are always remarkable and not to be missed! Also in January, we will be hosting information sessions for families interested in our Magnet program. Check with the school office for those dates and times.

Our next BIG event comes in February: the Science Fair! Be sure to get your child's registration form in by January 30th! Participation in the Science Fair is mandatory for all 4th grade students. However, children in all grades are welcome and encouraged to participate. Help with projects is available; parents should check with their child's teacher if such help is needed. Read much more about the Science Fair on the following pages.

We would love to see you at our next PTA Board meeting! It's January 6th, 9:30am, here at school. EVERYONE is welcome. You do NOT have to be a PTA Board member to attend. We value your input and it's a great way to learn about what's happening at school.

Finally, please consider serving on our PTA Board in 2009-2010. Our nominating committee will begin recruiting this month. It's important to know that many of our Board members only have two years left here at WashinGTON. It's extremely important that we bring in new leaders for 09-10. Think seriously about offering your time and talents to this wonderful school. Our students and staff benefit so much from parental involvement! THANK YOU!

Lynn Edmonds, PTA President
lsepta@nc.rr.com (859-5260)

Kay Brody, PTA President-Elect
Kay.brody@gmail.com (462-1936)



Newsletter Information

Would you like to see your information printed in the February 2nd edition of the newsletter? Just send your articles/pictures by **January 23rd** to Ann Overton at aoverton@aoassociates.net. Editing for space/content may occur. Thanks for contributing!

Inside this issue:

Upcoming Events	2
Ready-to-Learn Info	3
BoxTops Marketplace	4
Drink Pouch Update	4
CREATE Update	4
Volunteer Message	5
Bus Info	5
Character Ed	6
Reading Programs	6
IEP Workshop	7
Wizard Traffic School	7
Calendar & Contacts	8

PTA BREAKING NEWS

5th Grade Parents:

Magnet Middle School visits will be offered January 22nd & January 28th. Please visit the Wake County School System website for details or check with your child's teacher. www.wcpss.net



Upcoming Events



Musical at Washington!

Washington Arts Staff is proud to present the Broadway, Jr. version of Roald Dahl's "Willy Wonka, Jr." This Junior Broadway adaptation of Roald Dahl's book, "Charlie and the Chocolate Factory" uses elements of the book and both hit movies. Eighty Washington fourth and fifth graders have been hard at work in elective classes (Theater Production, On Stage with Music, Dance Ensemble and Behind the Scenes) to bring this great story to life. *Pure Imagination*, *The Candy Man*, and *The Oompa-Loompa Song* are just a few of the magical, musical numbers in the show!



Show dates are January 13th, 14, and 15th daily at 2pm. Also 2pm and 7pm on the 15th in the Washington Media Center. Admission is free!

Washington GT Magnet Science Fair is Fast Approaching



Calling all Science Wizards...the Washington GT Magnet Science Fair is fast approaching! Science Fair packets have been sent home in folders, and instructions are also listed on the Washington Elementary School website

(<http://washingtunes.wcpss.net/PTA/scifair.html> or go to the Washington school website, <http://washingtunes.wcpss.net>, click on PTA on the menu bar on the left, and look for the Science Fair link). In addition, there are a few copies of the booklet located in the school office.

Have you ever wondered about the difference between solid, liquids and gases? Or maybe you love exploring forms of energy, are curious about the foods we eat, or love animal-related science? Now is your chance to learn more and to have fun creating your project for the Washington GT Magnet Science Fair, scheduled for **February 4th** (set-up) and

February 5th (Project due date and day of Judging).

Registration Forms are due no later than Friday, January 30, 2009.

We also can use a few more helping hands if you are a parent or volunteer that wants to get involved! Thanks already to those of you who have sent emails and have offered some of your time, energy and talent. It takes a team to carry out programs such as the science fair-and to make it run successfully.

We look forward to seeing the great projects that our students are working on in early February!

If you have any questions or would like to volunteer, contact Elisa Newkirk, sciencemom4@gmail.com or Julie Osborne, Julie_chris@bellsouth.net.



Kindergarten Registration

Kindergarten Registration for Magnet Sibling will be on January 22, 2009 from 9am-3pm in the Ready to Learn Center.

Kindergarten Registration February 5, 2009 from 9am-3pm in the Ready to Learn Center for students that have Washington listed as their base school.

PLEASE BRING:

- ★ Birth Certificate
- ★ Immunizations
- ★ Proof of Residency



Children's Clothing Donations

We are accepting donations of children's clothing. We are especially in need of new girls and boys underwear, and little girl's pants size 4T, 5T, 6T. Shoes are also always welcomed. Items may be dropped off in the Ready to Learn Center.



Oatmeal Containers

We are looking for donations of oatmeal canisters for a project we will be doing in the Ready to Learn Center, if you have any please bring them by. Thank You.



Winter Class Schedule - Come Join Us!!!

Central Region Classes at Washington Elementary School

Monday

- ★ 9:00am - **Social Tots**
- ★ 10:00am - **Alpha Wizards** Creative Play (ages 3-5)

Wednesday

- ★ 9:30am - **Wiggle Wizards** Music & Movement (Toddlers 1-3)
- ★ 10:15am - **Mom's as Mentors** -call for information and registration
- ★ 10:30am - **Wiggle Wizards** Music & Movement (Toddlers 1-3)
- ★ 11:15am - **Mom's as Mentors** -call for information and registration

** January's Mom's as Mentors Topic - Building Words/Language

Friday

- ★ 11:00am - **Tiny Toes - Infant Development Class** (Only on the 2nd Friday of each month)
- ★ 11:00am - **Tiny Toes - Infant Play/Socialization** (Once a month, call for dates)

Other classes are available in the Central Region at Bugg Elementary, Poe Elementary, and Cedar Moor Apartments. Please call 508-0819 for information and registration.

When kids come to class please check-out our new pre-school computer programs during social tots or free play time.

Call Sabrina Winstead at 508-0819 or Beth Honeycutt 212-0506 for more information.

We are now Online

Please visit our page web for more information about the Ready to Learn Center at

<http://washingtontones.wcpss.net/rtl/rtl1.htm>

Or by going to the Washington Elementary Homepage and clicking on the Ready to Learn Link on the Left side.

We are excited to be working with your children!

Shop online and earn CASH for our school!

You like to shop online! Our school needs classroom supplies on a regular basis. We can earn **cash** for our school simply by purchasing these items through the Box Tops for Education website at www.btfе.com.

Here's how it works:

1. Sign up to support our school



Sign up at www.btfе.com

2. Shop online

Start each shopping trip at www.btfе.com/marketplace and click the link to the online store of your choice....and shop as you normally do. By starting at www.btfе.com, Box Tops can track earnings and automatically credit our school's account.

3. Our school earns cash

A percentage of every qualifying purchase is automatically donated back to our school!

Shop over 70 favorite stores such as: JCPenney, Target, Gap, Old Navy, Pottery Barn, Wal-Mart, Barnes & Noble, Circuit City, Office Depot, Office Max, Oriental Trading Company, Staples, Best Buy, Land's End, Limited Too, and Kohl's just to name a few!

Go on-line today and check it out!

Ask me, Becky Wiles, for help or more information, twiles@nc.rr.com or 650-1534.

DRINK POUCH BRIGADE
PROGRESS UPDATE...



NEARLY 3000 POUCHES COLLECTED TO DATE!

Wake to Wellness CREATE UPDATE -Outside Grants Committee Update



"Jumping for Joy" was the recent theme during the CREATE Jump Rope Club session held in December. With festive clothing and bells on tennis shoes, the Washington GT Magnet students enjoyed some holiday style jumping! Thanks to Mr. Reese for the special mix of holiday music!

CREATE, stands for "Climbing, Running, Energizers, Activities, Training...Equipping students for a

lifetime of fitness and wellness. The CREATE program is the grant that was funded in 2007 by the John Rex Endowment, Wake to Wellness grant. This grant was submitted and granted by Ms. Lynn Bitting, Washington GT Magnet's Physical Education instruction and the PTA Outside Grants Committee.

On the dance front, the teacher's that will be leading the instruction when the club resumes in January are putting on the final moves as they practice their ballroom dance skills-from the waltz, to the tango, your students will not want to miss this! Please see the online November PTA Newsletter for a listing of the club dates for both the Dance and Jumprope Clubs.

Thank you to all of the parents that are helping to make this program such a success for our students-we had more than 80 Washington Wizards jumping during our first session held in December!

If you would like more information regarding this program at Washington GT Magnet, or if you are interested in helping to prepare, research and develop grants so that more exciting programs can be developed for our students, please contact Julie Nettifee Osborne, Julie_chris@bellsouth.net.



Volunteering



A WORD ABOUT VOLUNTEERING

Our school is enhanced by many events that take place outside school hours. Some of those events, such as Fall Picnic and Math and Science Night are at risk of being discontinued due to a shortage of volunteers. Attendance at these events has been consistently strong, which leads us to believe that Washington families want us to continue hosting them. That is exactly what we want to do, but we truly need your help.

We in the PTA are working on how we solicit parent volunteers, and thinking about what we can do better. What prevents some of you from volunteering? Is it time? Distance? Schedule conflicts?

We KNOW many parents live far from the school. However, those of us who chose WashinGTon for our children need to think of this place as our neighborhood school. It is our school, along with the many families who do live in its neighborhood. We are a community and we can work together for our students.

That addresses the obstacle of "distance". What about the obstacles of "time" or "scheduling conflicts"? Of course many of our families have two working parents. We are acutely aware of that. We ask, however, of those of you who work, to please consider volunteering once per school year at an after hours event. If all of our working parents, moms and dads, volunteered at just one such event during the school year, we could easily continue hosting them.

Our school certainly has some wonderful parents who consistently give their time and volunteer a lot. We thank you all so very much; the PTA doesn't just thank you, the staff and the students thank you too! You do not go unnoticed and this article is not aimed at getting you to do more.

We want to diversify our volunteer pool. We want to bring new parents into the mix. Please help us do that. If you have not volunteered at an event yet, the second semester of school will offer MANY opportunities! Watch for ways to get involved early in 2009 and help us continue the many events we all seem to enjoy!

Thank you,

Lynn Edmonds, PTA President

lsepta@nc.rr.com

859-5260



Bus Information



Who to Call With Bus Questions?

As a magnet school, Washington has over 20 bus routes serving our families! Your patience has been appreciated as the beginning of the school year glitches have been worked out. Most bus routes are now stabilized and running their regular routes in a timely manner.

If you have questions regarding routes, times, drivers, etc., please contact the transportation office in charge of that route. Their numbers listed in the chart to the right.

If your concerns deal with student behavior on the bus, please contact our Administrative Intern, Kathy Livengood

(klivengood@wcpss.net), or Interim Principal, Dr. Rebecca Viersen (rviersen@wcpss.net).

As a reminder, students are no longer allowed to ride a bus home with a friend. Students may only ride the bus to which they are assigned. The principal no longer has the authority to allow a student to ride another bus.

Office	Routes	Telephone
Apex	Squirrel	387-2230
Broughton	Alligator, Bear, Cow, Dinosaur, Dolphin, Ladybug, Penguin, Tiger, Cat, Rabbit, Butterfly, Robin	856-7821
Cary	Frog, Duck, Turtle	460-3517
Garner	Puppy, Whale	662-2408
Green Hope	Owl, Falcon	380-3690
Southeast	Elephant	856-2828

★ Reading Programs ★

BOOKS & BEYOND (K-1)

There's a lot of reading going on in kindergarten and first grade. Several classes now have close to 100% participation, and we can't wait to see which class will get there first! We hope each family had some read-together family time over the break. It would be great for every student to receive an award for participation when the program ends in May. Check out your student's progress on the Media Center bulletin board the next time you're at school.



Need a new reading log? Students have an opportunity to pick up a new log each time they go to the Media Center. You can also download a reading log from the Washington website at washingtontones.wcpss.net. Click on Media Center on the left,

BOOK ADVENTURE (2nd- 5th)

There's still time to reach the Book Adventure goals for second quarter. Second quarter ends on January 23rd. The 2nd quarter deadline for Book Adventure will be announced soon. Points must have been earned since September 23rd. Cumulative point requirements are listed below by grade.



Media center staff and volunteers have been working to identify Book Adventure books in our collection. If you find a book you'd like to read and want to know if it has a Book Adventure test, you can always go to the Book Adventure website at www.bookadventure.org and click on "Book List" to look it up. Also check out the booklists on the back of your Character Rewards forms each month for reading suggestions. Books with a test on the **Book Adventure** website are now marked!

2 nd grade	Goal 400 pts	32 students
3 rd grade	Goal 400 pts	38 students
4 th grade	Goal 600 pts	5 students
5 th grade	Goal 600 pts	23 students

★ Character Education ★



SPOTLIGHT ON CHARACTER

Here's how our own Washington Wizards showed December's character trait, KINDNESS...

- *K- Saja complimented her brother on his clean room
Zoe comforts her friends with hugs when they're upset
- *1st- Bill helped buckle his little brother in his seatbelt to keep him safe
Esha offered her seat to an elderly lady in the waiting room
- *2nd- Hunter let his sister share his computer time
Ellis used his birthday money to buy gifts for his brothers
- *3rd- Jayana helped feed homeless people at the soup kitchen
Mohammed cleaned his mom's car for her
- *4th- Laura helped label food for the food bank; Kelli helped a friend reach a goal
- *5th- Colon gives up his recess time once a week to help with PALS; Kevin cleaned up someone else's spill without being asked

BOOK ADVENTURE TITLES ARE NOW MARKED ON THE CHARACTER REWARDS BOOK LISTS! LOOK FOR BOOKS ABOUT SHOWING KINDNESS WHEN YOU GET YOUR DECEMBER FORM.

We were so excited about the kindness, selflessness, and generosity shown by Washington students this past month, we had to share more than one example for each grade. Many students routinely help parents and siblings at home, whether it involves daily chores like washing dishes and helping siblings put away belongings or special projects like cleaning out a closet or helping with holiday decorations. Some of you showed kindness by comforting a friend who's upset, taking care of a class pet, or fostering a homeless pet. Others gave selflessly to others by offering a chair, doing yardwork for neighbors, or giving up your last piece of candy. And so many of you donated time and money to angel gifts, food banks, and soup kitchens to help those less fortunate than yourselves. We got a good feeling whenever we read about one of these many acts of kindness. We're sure those who received your kindness got a good feeling, and we hope the act of showing kindness gave you a good feeling, too.

THE CHARACTER TRAIT FOR THE MONTH OF **JANUARY** IS **SELF-DISCIPLINE**. SHOW US HOW YOU SHOW IT!

IEP Basics Workshop

Wake County Special Education PTA is sponsoring a presentation by the Exceptional Children's Assistance Center on the topic of Individualized Education Plans at their January 22nd meeting. Non-members welcome! The meeting will be at Meredith College in the Kresge Auditorium at the Cate Student Center at 6:30pm. See the Wake SEPTA website for directions or more information at www.WakeSEPTA.org or call 788-2500.



Wizard Traffic School

Did you know your child attended Traffic School at Washington GT Magnet the week before Thanksgiving? All students attended this special learning activity and received a yellow license showing they now know hallway expectations. Our new hallway expectations are part of Positive Behavior Support at Washington - also referred to as PBS.

What are hallway expectations? We're glad you asked!

Students now know when they are in the hallways at Washington to:

- ★ Use a soft voice
- ★ Be in the right place at the right time
- ★ Walk on the right
- ★ Keep your hands to yourself

Thanks to Mr. Barton, Ms. Drum, Mr. Chappell and a cast of talented students - all of Washington was able to watch a short video introducing the new hallway expectations. Many students now know how to sing a catchy tune called, *Always walk on the right side of the hall!* Ask your child to sing it for you.



Have You Joined the Washington PTA?

Thank you to the many parents and staff who have already sent in their membership forms. If you've been planning to join but haven't gotten around to it, now is the time to join. Just \$5 gives you voting privileges and a voice in the direction of our school's PTA. Go to the school website and click on PTA/Membership to download a form & to see a current list of members. Membership cards are sent home with your child so watch for them in the Monday Folder. If you need a membership form sent to you or have any questions, please contact Julie Zimmerman at juliez@nc.rr.com or call 803-8421.

PTA Returned Check Policy

Washington's PTA policy is that check writers will be held responsible for any and all fines charged to the PTA for checks returned for any reason- including NSF's.

Washington Events Calendar

JANUARY

T 6 PTA Board Mtg.
 T 13 — Th 15 Willy Wonka, Jr.
 M 19 Holiday
 F 23 End of Quarter
 M 26 Teacher Workday

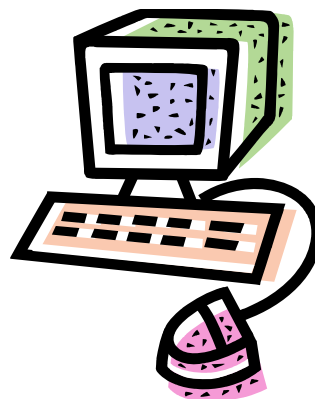
FEBRUARY

T 3 PTA Board Mtg.
 W 4 — Th 5 Science Fair
 Th 12 Early Release
 M 16 Teacher Workday

WASHINGTON WEBSITE

www.washingtontes.wcpss.net/PTA help us keep you informed find details on programs and events as well as:

- ★ Options to contact PTA committees (contact pg)
- ★ Email updates on WPTA & school happenings (sign up for yahoo mail)
- ★ Online Newsletter (click on the Newsboy)



For More Information, Contact...

PTA Office	Contact Name	Phone	Email Address
President	Lynn Edmonds	859-5260	lsepta@nc.rr.com
President-elect	Kay Brody	462-1936	Kay.Brody@gmail.com
Past President	Helen DeFazio	362-0510	hdefazio@earthlink.net
Secretary	Jennifer Wakeford	387-8024	jswakeford@yahoo.com
Treasurer	Carolyn Waldrup	342-0120	cadawald@yahoo.com
2nd VP-Ways & Means	Christy Flint	557-8312	christy.flint@gmail.com
3rd VP-Communication & Recogni-	Laura Kay	388-0294	jkaylkay@hotmail.com
4th VP-Community Support	Barb Campbell	363-3478	barbcampbell@nc.rr.com
5th VP-Media Center	Angela Sims	772-6689	aosims@yahoo.com
6th VP-Programs	(Position Open)		
7th VP-School Support	Dorothy Roche	854-9806	dwroche@bellsouth.net
School Administration	Contact Name	Phone	Email Address
School Principal	Peggy Beasley-Rodgers	856-7960	PBEASLEY-RODGERS@wcpss.net
Assistant Principal	Becky Viersen	856-7960	rviersen@wcpss.net
Faculty Rep/Elective Information	Jan Kidwell	856-7960	jkidwell@wcpss.net