

# The WashinGTON News

Washington GT Magnet Elementary School • 1000 Fayetteville Street • Raleigh, NC 27601 • 919-856-7960

October 2008 Edition

## From your PTA Leadership

It's official! WashinGTON students and staff are off to a great start this year! Fall is just beginning, and it promises to be a busy season here at school.

September was kicked off with a successful Open House and our first Spirit Night at DreamSports in Apex. Many thanks to Cheryl Rogers for coordinating our Spirit Nights. Fall Picnic got October off to a fun start on October 3<sup>rd</sup>! Thank you, Christy Flint, for all your work on that event!

September was also busy with various program kick-offs. For example, our students revved up their reading for Books & Beyond and Book Adventure. Character Education kicked off it's new year too with September's character trait: Responsibility. Your child may have been rewarded with a wristband or a charm for their wristband. October's Character Trait is Respect.

WashinGTON PTA's Phantom Fundraiser

began as well, at Open House on September 18<sup>th</sup>. It runs now until October 31st.

PLEASE donate to this fundraiser. **100% of the money goes to the PTA and is 100% tax deductible.** We use those funds in the classrooms, the media center, and for many programs and events that benefit all of our students and staff. Any amount, large or small, is valuable and appreciated.

Finally, as we settle into this Fall season and this school year, please know you are ALL welcome to attend all PTA Board meetings. We meet the first Tuesday of every month at 9:30am at school. Our October meeting will be held on October 7<sup>th</sup> in the French Room on the second floor. We would love to see you there!

**Lynn Edmonds, PTA President**

**lsepta@nc.rr.com (859-5260)**

**Kay Brody, PTA President-Elect**

**Kay.brody@gmail.com (462-1936)**



### Newsletter Information

Would you like to see your information printed in the November 3<sup>rd</sup> edition of the newsletter? Just send your articles/pictures by **October 25** to Ann Overton at [aoverton@aoassociates.net](mailto:aoverton@aoassociates.net). Editing for space/content may occur. Thanks for contributing!

### Inside this issue:

Fall Events	2
Phantom Fundraiser	3
Box Tops Promotion	4
Re-link Shopper Cards	4
Box Tops Marketplace	5
Drink Pouch Brigade	5
Character Ed	6
Bus Information	6
Reading Programs	7
PTA Membership	7
PBS	8
Congratulations!	8
Calendar & Contacts	9

## PTA BREAKING NEWS

### Recycle those Juice Bags!

Your child now has a place for those lunch box juice bags, such as Capri Suns. The deposit box is located in the school cafeteria. If you are willing to help with collection, please contact Jennifer Wakeford. More on page 5.

### Need a PTA Rainbow Packet?

Rainbow Packets were sent home on Tuesday, September 2<sup>nd</sup>. If you did not receive one, you can download most of it from our PTA website. It includes membership information, contact information and a volunteer form, plus lots more! If you cannot access the packet online, please contact Lynn Edmonds (859-5260).

### All visitors to the school must sign in!

If you're a regular visitor or not, everyone must sign in using the volunteer/ visitors log in the office. You **MUST** get permission from teachers to visit classrooms.

### Phantom Fundraiser is Happening NOW!

100% stays here! Donations are 100% tax-deductible! Let's get 100% participation! Read more on page 3.



# Fall Events



## McTeacher's Night is Coming!



**TUESDAY, OCTOBER 28th**  
**4:00pm - 7:00pm**

Corner of Wilmington  
and South Street

Washington will celebrate **McTeacher's Night** at the **McDonald's** located right by our school (at the corner of **Wilmington and South St.**).

The best part is that our school will receive a portion of the money the restaurant makes during this time period! During the event, different teachers, maybe even your own, will be taking orders and serving dinner when you stroll up to the McDonald's counter. So grab your friends and families and join Washington at our annual **McTeacher's Night**. It's sure to be a **Happy Meal!**

Don't forget, prizes per grade for the best coloring sheets will also be awarded! Be sure to do your best job on them at school (or at home) and turn them in to your teacher by Thursday, October 23.

## Washington Family Science and Math Night

**THURSDAY, NOVEMBER 20th**  
**5:30-8:30 PM**

Come enjoy pizza, learn more about science and math, and have a great time!

Explore and learn more about science and math at this special night for Washington families. Students and parents will have two hours to visit many different classrooms with exciting hands-on science and math activities with presentations. We need volunteers to sell pizza and to assist presenters throughout the night. Please call or e-mail Lynn Lang at 858-7118 or [lynnlang@nc.rr.com](mailto:lynnlang@nc.rr.com).

## Book Fair

**November 17th through November 21st**

Go on a Fun Safari for Books! The Book Fair provides a wonderful opportunity for students to take a Lion's leap into reading and shop for their own books.

As part of the book fair, WES will be participating in **One For Books** where all money collected goes directly to purchasing more books for our school.

The Book Fair will be open on Family Science and Math Night so Parents can shop too! More information will be coming soon!

**Volunteers are needed to help staff the book fair.** For more information, feel free to contact Ann Overton at [ako470@nc.rr.com](mailto:ako470@nc.rr.com) or 662-2596.

## Kids Voting at Washington

**FRIDAY, OCTOBER 24th**

As we all know, there is nothing like a presidential election to bring awareness to everyone about the importance of voting in a democratic society. Last year, some of our older students took part in a "Kids Voting" program in which we set up a "precinct" and the children filled out ballots and walked through the whole process just like adults do. This year, Election Day, is November 4 and Wake County schools are closed, so Washington teachers have chosen to participate in Kids Voting on Oct 24, instead. All of our students will be participating in some sort of voting activity on that day. Please help us build up the excitement by talking to your child not so much about *who* they are going to vote for, but *why* voting is so important!



## **With Deepest Sympathy...**

The Washington Elementary PTA and community would like to express our deepest sympathies to our Principal, Peggy Beasley-Rodgers at the death of her husband, Raymond S. Rodgers. Raymond, also known as "Chef Rameaux" passed away after an extended illness on Wednesday, September 17<sup>th</sup>. Our hearts go out to BR, their daughter, Austin, and all of their family.



## 11<sup>th</sup> Annual Phantom Fundraiser Ends October 31

Washington Elementary PTA's 11<sup>th</sup> annual Phantom Fundraiser is off to a great start! During the fundraiser's first two weeks, Washington friends, families and staff have donated more than \$5,000 - almost one-third of our goal!! Mr. Staley's fifth grade class is in the lead for class participation with 24% and both Mr. Staley's and Mr. Polinchak's classes won the Weekly Donation Contest at the end of Week 1.

Our goal this year is to raise \$18,000 (or \$30 per student) so that we can fund the programs and events that enrich the learning experiences of our students and support the educational objectives of our staff. If we reach our goal, we will be able to fully fund the programs scheduled for this school year, including \$5,000 of cultural arts programs, over \$6,000 in Teacher Start-up Funds, \$5,000 in Teacher Grants and \$2,000 for the Media Center to improve the quality and quantity of books and materials available to the students and staff at Washington.

Please consider inviting your family and friends to support your child's education by making a donation to the Phantom Fundraiser. Every donation made is 100% tax deductible and may help your child's class reach one or more of the following goals:

Weekly Donation Contest: Each week during Phantom (9/22-10/31) the class that collects the greatest number of donations (regardless of amount) will earn a reward such as extra recess or lunch on the courtyard. (To be scheduled at teacher's convenience.)

Participation Award: All classes to achieve 75% or greater participation will earn a Classroom Supplies Grant.

1<sup>st</sup> Class to Reach 100% Participation: The first class to reach 100% participation will receive a special in-class program from an educator from the NC Museum of Natural Sciences.

Most Money: The class that raises the most money will celebrate with popcorn and a class movie. (Movie to be selected by the teacher and scheduled at his or her convenience.)

ALL students who participate in the fundraiser will receive individual rewards such as wristbands (K), Homework Passes (1<sup>st</sup> & 2<sup>nd</sup>), Mad Money or Grab Bags (3<sup>rd</sup>), Bonus Bucks (4<sup>th</sup>) or Oops Passes (5<sup>th</sup>).

Phantom Fundraiser information and donation cards went home on September 22, but additional donation cards are available at

<http://washingtontes.wcpss.net/PTA/PhantomDonorCard2008.pdf>.

If you have any questions or would like more information, please contact Christy Flint at 557-8312 or [christy.flint@gmail.com](mailto:christy.flint@gmail.com)

### \$\$ Double Your Phantom Fundraiser Donation \$\$

Many companies will match donations made by their employees. During last year's Phantom Fundraiser, Washington parents raised an additional \$600 for the school by participating in Matching Gifts programs offered by companies such as GlaxoSmithKline, Progress Energy, Cisco, Wachovia, Tyco, Qualcomm and BD. Please ask your employer if they have a Matching Gifts program and then double your Phantom contribution by participating in the program.

Questions? Contact Christy Flint, VP Ways and Means, at [christy.flint@gmail.com](mailto:christy.flint@gmail.com).

### Your Time is Money for Our School

Many companies in the Triangle area will give a school money when their employees (or the spouses of employees) volunteer their time at the school. A few of these programs include **SAS' Employee Volunteer Fund** and **GlaxoSmithKline's GIVE**

program, both of which enable employees to earn up to \$500 per year for educational organizations at which they volunteer. **IBM** has a program called **On Demand Community** through which parents who volunteer at their schools can qualify for equipment grants or cash awards. Please take the time to ask your Human Resources person if such a program exists at your place of business, and if it does, consider participating in it during the school year.



Double Your BoxTops promotion runs through end of OCTOBER!!!



We have a FABULOUS opportunity to double the value of the BoxTops we send in this month! Every HOUSEHOLD is eligible to submit TWO "Double Your BoxTop Forms". If you have extra BoxTops, ask your friends and family if you can send in the sheets with their name and address.

- ★ You can print more forms through this link:  
<http://washingtontes.wcpss.net/PTA/2008doubleboxtops.pdf>.
- ★ If you access the Washington Website manually, the link can be found on the first page of the PTA section.

If you don't have access to a computer, call Becky Wiles at 650-1534 and I will send forms home with your child.

Remember to send your forms in to school by **Friday, October 24<sup>th</sup>** so we have time to mail them out before the deadline. Thanks!

DID YOU THINK TO RE-LINK???

Every fall you must Re-Link your shopper cards in order to earn money for Washington. This is "**Free Money**"! You are shopping at these stores anyways. Be sure your patronage is "paid back" by linking your shoppers cards today. Follow these links and do it **NOW** before you forget...

Go to [www.harristeeter.com](http://www.harristeeter.com)

- ★ Click on "Community" then "Together in Education". On the left side, click on "Link to your school"
- ★ Enter requested information including your VIC Card # and our school code **2308**

Go to [www.foodlion.com](http://www.foodlion.com)

- ★ On the left, click on "Lion Shop N Share" and then select Register MVP Cards.
- ★ We do not have a specific number at Food Lion, but the system will find Washington by following the prompts.

Go to [www.target.com](http://www.target.com)

- ★ Click on "Red Cards" and under "Rewards and Benefits", select "Take Charge of Education".
- ★ Enroll under school id **#81104**.

If you do not have access to a computer, please complete the following information and I will link your cards for you!

**Kroger Shopper Cards must be RE-Linked AT THE STORE!**

<b>PLEASE UPDATE MY SHOPPER CARDS!</b>
First Name _____
Last Name _____
Phone _____
Food Lion Card # _____ (enter all 12 digits)
Harris Teeter Card # _____ (enter all 11 digits)
Please return to: <b>Becky Wiles, PTA Passive Fundraising</b>

- ★ Take this UPC code (which has our school number of 80754) to your local Kroger to link up your Kroger card.



- ★ We earn points for all purchases you make at Kroger. These points can be used to fill teacher requests for supplies.
- ★ Last year we earned enough points to purchase many supplemental teaching items for various classrooms!

## Shop online and earn CASH for our school!

You need to shop for Holiday Gifts! Our school needs classroom supplies on a regular basis. We can earn cash for our school simply by purchasing these items through the Box Tops for Education website at [www.btfe.com](http://www.btfe.com).

Here's how it works:

### 1. Sign up to support our school

Sign up at [www.btfe.com](http://www.btfe.com)

### 2. Shop online

Start each shopping trip at [www.btfe.com/marketplace](http://www.btfe.com/marketplace) and click the link to the online store of your choice...and shop as you normally do. By starting at [www.btfe.com](http://www.btfe.com), Box Tops can track earnings and automatically credit our school's account.



### 3. Our school earns cash

A percentage of every qualifying purchase is automatically donated back to our school!

Shop over 70 favorite stores such as: JCPenney, Target, Gap, Old Navy, Pottery Barn, Wal-Mart, Barnes & Noble, Circuit City, Office Depot, Office Max, Oriental Trading Company, Staples, Best Buy, Land's End, Limited Too, and Kohl's just to name a few!

Go on-line today and check it out!

Ask me, Becky Wiles, for help or more information, [twiles@nc.rr.com](mailto:twiles@nc.rr.com) or 650-1534.

## The Drink Pouch Brigade

### JOIN THE DRINK POUCH BRIGADE... HELP FROM HOME!

Have you eaten lunch with your child lately? Then you may have noticed the giant juice pouch in the cafeteria. This box is the collection bin for used drink pouches, and we've already collected over 1000 pouches for recycling! We need volunteers to take pouches home each weekend and prepare them for shipping. You may want to pick a regular Friday each month, or choose a month and do all the Fridays in that month. Or you may just want to empty the bin occasionally when you eat lunch with your child. However you can help, we can use you! You can also prepare your own pouches at home and send them in. Do you contribute drink pouches for a snack for your soccer, hockey, or basketball team? Collect the empty pouches, clean them, and send them in.

Here's how to prepare pouches at home:

- ★ Cut straight across the top, just below the seal.
- ★ Rinse the inside with hot water.
- ★ Flatten and dry them off.
- ★ Place them in a Ziploc bag marked "Drink Pouch Brigade" and send them in to your teacher just as you do Box Tops and Campbell's labels.



All pouches sent from home must be clean and in a sealed bag. Please note that the program recycles pouches only, *NOT JUICE BOXES*. To volunteer, please contact Jennifer Wakeford at 387-8024 or [jswakeford@yahoo.com](mailto:jswakeford@yahoo.com). The PTA thanks you, and the Earth thanks you!

## PTA Returned Check Policy

WashingTon's PTA policy is that check writers will be held responsible for any and all fines charged to the PTA for checks returned for any reason- including NSF's.

# Character Education



## SPOTLIGHT ON CHARACTER

Here's how our own Washington Wizards showed last month's character trait, **RESPONSIBILITY**...

- \*K- Luke found a coin and asked who it belonged to instead of just keeping it
- \*1st- Grace tacks and untacks her horse for riding
- \*2nd- Tess takes care of her little brother
- \*3<sup>rd</sup>- Lydia keeps up with and takes care of her new eyeglasses
- \*4th- Sydney calls home when she's invited inside a friend's house
- \*5th- Danielle helps the coach put the equipment away after softball practice



We also saw lots of examples of Washington students helping to care for family pets, cleaning their rooms and doing their chores regularly, keeping up with Monday folders and homework, and owning up to their mistakes rather than placing the blame on others. WOW! What awesome examples of **RESPONSIBILITY**! Character Rewards forms for **RESPONSIBILITY** may be submitted through Thursday, October 9<sup>th</sup>.

# Bus Information

## Who to Call With Bus Questions?

As a magnet school, Washington has over 20 bus routes serving our families! Your patience has been appreciated as the beginning of the school year glitches have been worked out. Most bus routes are now stabilized and running their regular routes in a timely manner.

If you have questions regarding routes, times, drivers, etc., please contact the transportation office in charge of that route. Their numbers listed in the chart to the right.

If your concerns deal with student behavior on the bus, please contact our Administrative Intern, Kathy Livengood ([klivengood@wcpss.net](mailto:klivengood@wcpss.net)), or Interim Principal, Dr. Rebecca Viersen ([rviersen@wcpss.net](mailto:rviersen@wcpss.net)).

As a reminder, students are no longer allowed to ride a bus home with a friend. Students may only ride the bus to which they are assigned. The principal no longer has the authority to allow a student to ride another bus.

Office	Routes	Telephone
Apex	Squirrel	387-2230
Broughton	Alligator, Bear, Cow, Dinosaur, Dolphin, Ladybug, Penguin, Tiger, Cat, Rabbit, Butterfly, Robin	856-7821
Cary	Frog, Duck, Turtle	460-3517
Garner	Puppy, Whale	662-2408
Green Hope	Owl, Falcon	380-3690
Southeast	Elephant	856-2828



## Early Arrival Program

Washington Elementary offers an Early Arrival Program for students. The hours are 7:00am-8:45am. Cost is \$52.50 per month, plus a one-time \$10.00 Registration Fee.

There are a few openings available. If you are interested, please call Kathy Livengood in the school office: 856-7960

## LUNCH TIME COURTYARD EXPECTATIONS

- ★ STAY SEATED AT YOUR TABLE
- ★ NO RUNNING OR HORSEPLAY
- ★ USE GOOD TABLE MANNERS
- ★ CLEAN UP THE TABLE AND GROUND BY YOUR SEAT
- ★ INVITE TWO (2) FRIENDS



## JOIN PTA TODAY!

We are well on our way to our 100% PTA Membership goal! Many thanks to the parents and teachers who have already joined & sent in their forms. If you haven't yet joined please consider doing so. It is just \$5.00 for an individual membership. Silver level (\$10) allows both parents to join and our gold level (\$20) which is two memberships plus an added bonus that stays here in our Washington PTA. Forms were sent home in the rainbow packet and are available on our school website. If you haven't received your membership card, check in your child's Monday folder. These are just for your records. Not sure if you've joined yet? Log onto the school website under PTA/ membership where a list of current members are located. If you have any questions please contact Julie Zimmerman at [juliez@nc.rr.com](mailto:juliez@nc.rr.com). Thanks for supporting the PTA!

## Reading Programs



### BOOKS & BEYOND (K-1)

If you visited the Media Center during Open House, you probably saw the garden path on the bulletin board where our kindergarten and first grade students will soon begin to "catch the reading bug." Information about the program will be sent home to all kindergarten and first grade parents on October 6<sup>th</sup>, and students will begin recording what they read on October 13<sup>th</sup>.

A huge thanks to all the people who have already signed on to help with this program. Volunteer training is already underway. **Volunteers are still needed for Mrs. Baidon's and Ms. Hayes' classes on Tuesday afternoon or Wednesday morning and Ms. Rowell's and Ms. Witkowski's classes on Wednesday afternoon or Thursday morning.** If you have one hour to give every other week and would like to help with this program, please contact Jennifer Wakeford at 387-8024 or [jswakeford@yahoo.com](mailto:jswakeford@yahoo.com). More details about the program are available on the Washington website.



### BOOK ADVENTURE (2<sup>nd</sup>- 5<sup>th</sup>)

The Book Adventure program kicked off on September 23<sup>rd</sup>. **Book Adventure** is a free program available on the Internet. You can access the site through a link in the Media Center section of the Washington website. Book Adventure helps students identify suggested book titles based on their reading level and subject interest. After they've read a book, they take a comprehension quiz to earn points. Each student who reaches the quarterly point goal will receive an incentive. The first quarter incentive is a colorful shoe charm and a coupon for a free Wendy's frosty treat. First quarter goals are listed below.

2 <sup>nd</sup> grade	Goal 400 pts
3 <sup>rd</sup> grade	Goal 400 pts
4 <sup>th</sup> grade	Goal 600 pts
5 <sup>th</sup> grade	Goal 600 pts

More details about the program are available on the Washington website. Go to [washingtomes.wcpss.net](http://washingtomes.wcpss.net) to check it out!

## Washington Adopts PBS

Positive Behavior Support (PBS) has been piloted in a number of Wake County Elementary schools and this year Washington GT is implementing the program. What does that mean for you and your child?

Washington GT has always worked hard to nurture personal responsibility and positive behaviors in our students. PBS will bring a more formal structure to those efforts. A school-wide team, headed by counselors Jean Sculati and Joleen King will adapt the county program for Washington. Team members include Becky Viersen, Kathy Liven-

good, Marti Huisman, Nathan Ash, Nate Barton, Theresa Ash, Sonia Drum and Garrick Jordan.

Some examples of PBS recommended actions for teachers include:

- ★ Praise children more often than correcting them.
- ★ Be consistent and predictable.
- ★ Make expectations clear and communicate them often.
- ★ Find strengths in all children and nurture them.

Defining these expectations; teaching them; communicating them to students, parents, faculty

and staff; practicing them and reinforcing them is the plan that we are working on for all aspects of the school day. We ask for your help in talking to your children about S.T. A. R., our first step in implementing PBS at Washington.

**S** - Show self-control

**T** - Take responsibility

**A** - Act safely

**R** - Respect yourself and others

You will be hearing more about PBS as the year continues. If you have any questions or suggestions, please call Jean Sculati or Joleen King at 856-2965.

## Magnet Programs Info



### Moms Morning Out with the Magnet Programs Pre-K Parent Info Session

Thursday, October 9

10:00 am - 12:00 pm

Magnet Resource Center  
1600 E. Millbrook Road  
Raleigh, NC 27609

- ★ Explore the elementary magnet school programs
  - ★ Visit with parents from each participating magnet school
  - ★ Inquire about the magnet application process
  - ★ Expand your child's educational options
- For more information, please call 501-7900

## Congratulations!

Washington Elementary recently received \$1000 from Sam's Club this month as part of a Community Grant. Sam's Club has chosen Washington Elementary as their Partner School.

Additionally, Elo Goodman was presented with a "Teacher of the Year" award from Sam's Club. Washington Elementary was again presented a \$1000 check that will be used as a grant for Ms. Goodman.

Ms. Goodman and students accept a "Teacher of the Year" Grant from Sam's Club.



## OCTOBER

- T 7 9:30 am PTA meeting
- F 10 Teacher Workday
- Th 16 Early Release
- T 28 McTeacher's Night
- Th 30 1st Qtr. Electives End
- F 31 Phantom Fundraiser Ends!

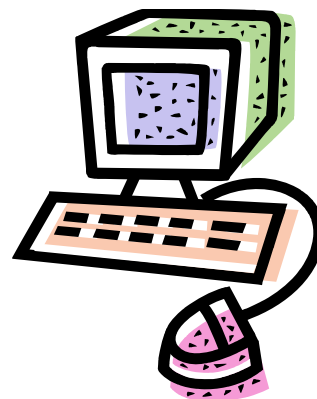
## NOVEMBER

- M 3, T 4 Teacher Workdays
- W 5 2nd qtr. Electives Begin
- T 11 Veteran's Day Holiday
- M 17 — F 21 Book Fair
- Th 20 Math/Science Night
- W 26 — F 28 Thanksgiving Holiday

## WASHINGTON WEBSITE

[www.washingtontes.wcpss.net/PTA](http://www.washingtontes.wcpss.net/PTA) help us keep you informed find details on programs and events as well as:

- ★ Options to contact PTA committees (contact pg)
- ★ Email updates on WPTA & school happenings (sign up for yahoo mail)
- ★ Online Newsletter (click on the Newsboy)



## For More Information, Contact...

PTA Office	Contact Name	Phone	Email Address
President	Lynn Edmonds	859-5260	<a href="mailto:lsepta@nc.rr.com">lsepta@nc.rr.com</a>
President-elect	Kay Brody	462-1936	<a href="mailto:Kay.Brody@gmail.com">Kay.Brody@gmail.com</a>
Past President	Helen DeFazio	362-0510	<a href="mailto:hdefazio@earthlink.net">hdefazio@earthlink.net</a>
Secretary	Jennifer Wakeford	387-8024	<a href="mailto:jswakeford@yahoo.com">jswakeford@yahoo.com</a>
Treasurer	Carolyn Waldrup	342-0120	<a href="mailto:cadawald@yahoo.com">cadawald@yahoo.com</a>
2nd VP-Ways & Means	Christy Flint	557-8312	<a href="mailto:christy.flint@gmail.com">christy.flint@gmail.com</a>
3rd VP-Communication & Recogni-	Laura Kay	388-0294	<a href="mailto:jkaylkay@hotmail.com">jkaylkay@hotmail.com</a>
4th VP-Community Support	Barb Campbell	363-3478	<a href="mailto:barbcampbell@nc.rr.com">barbcampbell@nc.rr.com</a>
5th VP-Media Center	Angela Sims	772-6689	<a href="mailto:aosims@yahoo.com">aosims@yahoo.com</a>
6th VP-Programs	(Position Open)		
7th VP-School Support	Dorothy Roche	854-9806	<a href="mailto:dwroche@bellsouth.net">dwroche@bellsouth.net</a>
School Administration	Contact Name	Phone	Email Address
School Principal	Peggy Beasley-Rodgers	856-7960	PBEASLEY-RODGERS@wcpss.net
Assistant Principal	Becky Viersen	856-7960	rviersen@wcpss.net
Faculty Rep/Elective Information	Jan Kidwell	856-7960	jkidwell@wcpss.net