



The WashinGTON News

Washington GT Magnet Elementary School • 1000 Fayetteville Street • Raleigh, NC 27601 • 919-856-7960

September 2009 Edition

From your PTA Leadership

Welcome to the 2009-10 school year! Our family was more than ready for school to start up again and excited to meet their new teachers and classmates. It was wonderful to meet so many new families at Meet the Teacher this year and we look forward to your taking an active part in our school community.

As you are all aware, our school system is under tremendous economic pressure this year. The current budget crises cost our school the third grade teacher's assistants as well as both of our part time media assistants. Additionally, the school budget for materials and copying costs has been cut dramatically. You may see more frequent requests for classroom materials this year and if you are in a position to provide some of these materials they will be tremendously appreciated.

Don't forget to register to be an approved volunteer on one of the computers at school, it can't be done from home. This is something that you need to do every year. It is required for anyone volunteering through school and if you wish to attend field trips.

If you have any questions about the PTA and how we attempt to help the faculty, staff and students at WashinGTON, please let me know at kay.brody@gmail.com.

Kay Brody, PTA President
Kay.brody@gmail.com (462-1936)

PTA BREAKING NEWS

All Visitors to the school must sign in!

You must sign in at the office when visiting school for any reason. Office staff can assist you with a visitor's pass or volunteer's pass. You need to get permission from teachers to visit classrooms. Thank you!

Wizard Wear for Sale!

An order form for Wizard Wear can be found on Page 8 of the newsletter. We have new shirts this year as well as the tie-dye shirts from last year AND the hoodies! Order soon!

Wizardinfo Yahoo Group!

Have you heard about Washington's Yahoo Group called "Wizardinfo"? This is a great way to receive information from the PTA between newsletters. Go to our website: <http://washingtontones.wcpss.net/PTA> and look for the link: "Sign up for the PTA Yahoo Group".

Newsletter Information

Would you like to see your information printed in the October 5th edition of the newsletter? Just send your articles/pictures by **September 28th** to Ann Overton aoverton@aoassociates.net. Editing for space/content may occur. Thanks for contributing!



Inside this issue:

Kudos/Awards	2
Upcoming Events	3
Phantom Fundraisers	4
Passive Fundraising	4
Volunteer Opportunities	5
Drink Pouch Brigade	5
Character Ed	6
Reading Programs	6
PTA Membership	7
Wizard Wear	8
Calendar & Contacts	9

 **KUDOS!**  **GREAT JOB!**  **THANKS!**  **WELL DONE!** 

Teacher Breakfast

Each year at the beginning of the year the PTA hosts a breakfast for the teachers on their first day back to school. Thanks to the following parents for waking up early to get to school on August 18th to serve our teachers: **Jane Godwin, Lynn Edmonds, Jennifer Carroll, Julie Zimmerman, Lynn Lang and Nhien Ledinh.**

Meet the Teacher Days

On our Meet the Teacher Days some dedicated parents spent most of the day registering people for PTA Membership and selling our new Wizard Wear. Thanks to **Tonya and Steven Finney, Christy Flint, Julie Zimmerman, Jennifer Carroll, Lynn Edmonds, Laura Swackhammer and Cathryn Flint (class of '09).**

Audit Committee

Annually our PTA books must be audited. Thank you so much to **Vicki Hood, Cheryl Scarborough and Christy Flint** for pouring over the books to complete the audit of our financials from the 2008-09 school year.

Special Thanks to **BJ's** for donating two \$25 gift cards - one for our Teacher Breakfast and one for Kindergarten Meet the Teacher Day. It helped subsidize our food and beverage costs. And to **Chick Fil-A** which donated a tray of chicken biscuits for the Teacher Breakfast and delivered the food for no charge!

Washington GT Magnet Receives A+ Fit School Award!

Washington GT Magnet was selected as a recipient of the A+ Fit School Grant with notification to the school occurring in July, 2009. This designation, which was based on fitness and wellness programs for students and staff, wellness committees, nutrition and other factors is quite an honor for Washington GT Magnet! This designation also provided Washington GT Magnet with a banner, a **\$1,000.00 grant**, and publicity as an A+ Fit School. **Ms. Lynn Bitting**, Physical Education Instructor for Washington GT Magnet, will oversee the use of the funds for this project that will go towards additional fitness and wellness initiatives at the school.

Washington GT Magnet would not have been a candidate for this program without the continued programs that have been funded by the John Rex Endowment, Wake to Wellness program. The CREATE Program, "Climbing, Running, Energizers, Activities...training and equipping students for a lifetime of health and fitness" has helped to fund expanded playground equipment, Ballroom Dance and Jumprope club, classroom energizers, the running club and other projects at Washington GT Magnet the last 2 years. The FY 2009-2010 will be our last year of this program grant, which has funded \$10,000 per year for a total of 3 years. We continue to thank the John Rex Foundation for their continued support of these incredible programs!

On another grant note, Ms. Lynn Bitting and PTA Outside Grants Committee Chair Julie Nettifee Osborne were recently asked to be one of 2 schools to highlight their programs at the annual Wake to Wellness program meeting.



Open House

THURSDAY, SEPTEMBER 10th

K-2nd grade 6:00-7:15pm

3rd- 5th grade 7:30-8:45pm

This very important evening is your chance to hear from your child's teacher about what they will be doing K-2nd grades. Come to the cafeteria for instructions and a BRIEF PTA meeting, where we will vote on the 2008-2009 PTA budget. Parents will then go to classrooms and hear from teachers. We wrap up promptly at 7:15 so that grades 3-5 can come in. Parents of 3rd-5th graders need to report to the cafeteria at 7:30 for instructions and to attend the same, BRIEF PTA meeting. A reminder will be sent home the week of Open House. Questions? Call the school office at 856-7960.

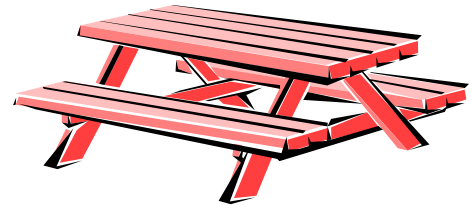


WashingTon's Fall Picnic

FRIDAY, OCTOBER 2nd (rain or shine)

5-7 pm

Every year, Washington PTA organizes an evening picnic during which the children can play with their friends (old and new) and the adults (parents and staff) can relax and socialize. This year's picnic will be held rain or shine on Friday, October 2nd from 5 to 7 pm. Details coming soon in a Monday folder near you!



McTeacher Night

TUESDAY, OCTOBER 6th, 4-7 pm

Washington will celebrate McTeacher's Night at the McDonald's located right by our school (at the corner of Wilmington and South St.) on Tuesday October 6th from 4-7PM. The best part is that *our school will receive a portion of the money the restaurant makes during this time period!* During the event, different teachers, maybe even your own, will be taking orders and serving dinner when you stroll up to the McDonald's counter. So grab your friends and families and join Washington at our annual





Washington PTA's 12th Annual Phantom Fundraiser

In 1997 Washington parents decided they wanted to support the students and staff at Washington Elementary without raising money through sales-based fundraisers that yielded low returns. They wanted a fundraiser that didn't involve sending their children out to sell overpriced products to complete strangers or reluctant relatives. Enter Washington's Phantom Fundraiser.

For 12 years, 100% of contributions made to Washington's Phantom Fundraiser have gone directly to Washington Elementary PTA in the form of money and corporate matching grants*. Due to the success of this unique fundraiser, instead of constantly bombarding parents and students with fundraising schemes, the PTA has been able to focus on bringing cultural performances to the students, supplying classrooms with important learning materials and equipment and providing support and grants for school faculty.

With respect to the difficult economic times many of us are facing, we have reduced our fund raising goal by 20%. Our goal for the 12th annual Phantom Fundraiser is to raise \$14,000. This amount, when added to Passive

Fundraising programs such as Box Tops and grocery store rewards cards, will help fund this year's leaner budget and allow us to provide quality programs such as Teacher Start-up Funds, Weekly Readers and several cultural arts performances, as well as educational events such as Family Math and Science Night, Science Fair and Field Day. With just over 600 students at Washington, if the average donation made per student is \$25, we will meet our goal — and won't have to go in search of a spring fundraiser!

On Monday, September 14th you will receive details about how you, your friends, your family and even your employer* can participate in this year's Phantom Fundraiser. Let's get the money taken care of now so that we can enjoy our time together at Washington!

** Many employers will match their employees' donations. Washington Elementary parents and other family members employed at Quest Software, GlaxoSmithKline, Barclays Capital, Cisco, Oracle Corporation and Qualcomm helped to raise approximately \$1,300 in additional money for last year's Phantom Fundraiser. To find out if your employer participates in a matching grant program, talk to your Human Resources department or review our list of Employer Programs at <http://washingtontes.wcpss.net/PTA/passivematching.html>.*

Passive Fundraising

WHICH CLASS CAN SEND IN THE MOST BOXTOPS THIS YEAR?!

Our first **deadline** for turning in BoxTops is **October 31st** so we can get CASH in December. We hope you have been clipping all summer. Now you can clean out the drawer and check your cupboards for all your BoxTops. Send them to school in an envelope labeled BOXTOPS with your teacher's name(s) on the envelope so the class gets credit towards our yearly contest. We'll keep you posted on the standings via WZRD News and the newsletter. Don't wait! Send them in today!


Special BoxTop Promotion at KMart

Between now and the end of the month, if you buy 5 items with Box Tops, you get a bonus 20 Box Tops at checkout. If you buy 10 items, you get 70 bonus Box Tops. BTW, one parent bought 10 items each time she went, and she got BOTH bonuses (90 total Box Tops)! Even if you don't usually shop at KMart, it's easy to pop in and find 10 items. Some common Box Tops items are Kleenex, Ziploc bags and containers, Betty Crocker fruit snacks, and General Mills cereals.



[Link Your Shopping Cards to Earn Money for Washington!](#)

Every time you go to the grocery store you COULD be earning "FREE MONEY" for WashinGTON. But if you haven't linked your shopper's card, we are missing out. Here's what you need to do:

- **FOOD LION** - MUST BE LINKED ONLINE and we MUST HAVE 25 LINKED CARDS in order to receive any earnings! Go to www.foodlion.com and click on the Lion's Shop and Share link to select Washington as your charity.
- **HARRIS TEETER** - Go to the store or on-line to www.harristeeter.com and select the Together in Education Program link. Our school's number is 2308.
- **KROGER** - Take the Kroger bar  WASHINGTON ELEMENTARY SCHOOL code (shown here) to your nearest Kroger to link your card to Washington.
- **TARGET** - At the store, or on-line at www.target.com under Take Charge of Education, link to Washington's number 81104.

★ Media Center Volunteers Needed! ★★☆☆☆☆☆☆☆☆

The Library Media Center needs your help!

We are providing library services without the help of our magnificent Media Assistants this year. Jane Henderson teaches 50% during elective classes each afternoon, so there's not much time for her to tackle any other responsibilities in the library. So we need you! Below are a few of the tasks with which we need help! Please let Bee Pramojaney (loobe@att.net), our PTA representative, or Ms. Crosson (vcrosson@wcpss.net) know if you can help us out!

- Shelving books, an absolute must to find the right books for our students!
- Pulling books from a list for teachers.
- Creating the display for the shelf by the LMC doors!
- Straightening and creating labels for the bookshelves.
- Check In & Out for K-2 classes.
- Books & Beyond (K-1 reading program) Help—contact Jennifer Wakeford
- Book Adventure (reading incentive program for grades 2-5)—Jennifer Wakeford (jswakeford@yahoo.com).
- Put Book Adventure stickers on book spines
- Covering shoeboxes and display boxes with paper (we have) to display books face out for better promotion.

We will be happy to show you what to do and how to shelve library materials! We need your help to make our Library Media Center work! Ms. Henderson and I need time to teach and help teachers teach, with your assistance we can make it work!

★ Outside Grants Committee Needs You ★★☆☆☆☆☆☆

The Outside Grants Committee has already has several requests from teachers and specialists to help this year with projects...and we need your help! With all of the financial cuts, grants are still one way that the school can obtain potential funding for projects that may not be funded through normal means. Computer research, budget development, entering teacher wishes on Donorschoose...all are items that can support this committee, AND, can easily be done from your home outside of normal school hours. If you are interested in helping with this committee, and with helping to continue the committee forward in the years to come, email Outside Grants Committee Chair, Julie Nettifee Osborne, julie_chris@bellsouth.net or call 919-656-4963. Even a small donation of time can make a big difference in the possibility of being rewarded a grant!

★ Kindergarten Clothing Needed ★★☆☆☆☆☆☆

The Kindergarten team needs both boys and girls underwear in small sizes, 4/5, 6/7 and even some 7/8. Pants would also be appreciated. We all remember how hard the beginning of the year can be for some of our youngest students. Sometimes they require more than one change of clothing in a day. Belts would also be appreciated. If you have any items you can donate please send them to school to the attention of Mrs. Ida Jackson.

The **underwear must be in a an unopened package and unworn**, however the pants and belts can be hand-me-downs.

★ Send in Those Drink Pouches ★★☆☆☆☆☆☆

If you've been saving juice pouches all summer, now's the time to send them in! Make sure they're clean and dry, place them in a sealed ziploc bag, and mark the bag "PTA." Our school gets 2¢ for every pouch. Last year, we kept 6000 pouches out of landfills and recycled them through Terracycle. You may have seen some of Terracycle's Brigade products when you did your back-to-school shopping...pencil pouches, backpacks, folders.

What a great way to help the Earth and your PTA at the same time! To learn more about the Drink Pouch Brigade and Terracycle, visit their website at www.terracycle.net.





Character Education



CHARACTER REWARDS HAS A NEW LOOK!

Check your child's Monday folder today for the new Character Kids Activity Page! The new page has fun activities to help your child learn about the character trait of the month. Parents, you can use the information on the page to talk with your child about the trait. Take a look at the booklist on the back, and check out a book about a character who shows the character trait of the month. Then, watch for your child to show the trait of the month and complete the certificate. Your child can place the completed certificate in one of three collection boxes located throughout the school to receive a wristband or "Wizard with Character" charm. Students will also be recognized with their names on the Character Rewards Tree in the cafeteria and in the PTA newsletter, and some examples will be selected for the Wizard News. Students are encouraged to submit original works such as poems or stories about the trait, as well. Original works may be read on Wizard News or printed in the PTA Newsletter. Be sure to include your name and teacher's name. NOTES: Cary Towne Center is not sponsoring this program this year, so there will be no prizes at the mall. Certificates must be submitted by the deadline printed on the form.



READY, SET, READ (AND VOLUNTEER)!



PTA Reading Incentive programs will begin soon. Students in kindergarten and first grade participate in **Books and Beyond**. The goal of the program is to expose young readers to more books and encourage them to

read as much as possible. Students keep track of what they've read (and what's been read to them) on reading logs, and their progress is tracked on the Media Center bulletin board. They also receive incentives at regular intervals. **In order for this program to run smoothly, we need at least one volunteer for every K-1 classroom. Please consider helping when your child's teacher or Room Parent asks.** The program is set to start on Monday, October 12th. Kindergarten and 1st grade parents will receive more information at Open House, and a detailed flyer will be sent home about a week before the start date.

Students in 2nd through 5th grades participate in the **Book Adventure** program. **Book Adventure** is a free

program available on the Internet that works much like Accelerated Reader. Students can use the online **Bookfinder** to identify suggested book titles based on their reading level and subject interest. After they've read a book, they take a comprehension quiz to earn points. Incentives are awarded quarterly for students who meet posted point goals. In the coming weeks, students will receive training on how to use the website. Students who are familiar with the site and have been working to earn prizes offered by the site this summer **DO NOT** need to worry about lost points. The Book Adventure volunteers and Media staff look at *points earned*, regardless of whether any of them have been redeemed for online prizes. We will take a "snapshot" of each student's points on the school start date, and students will begin to accumulate points toward school goals from that point forward. **Volunteers are needed to identify Book Adventure titles in our Media Center. If you have a little time or a lot, we can use you! Please contact Jennifer Wakeford at jwakeford@yahoo.com or 387-8024.**



ATTENTION: FIELD TRIP CHAPERONES and VOLUNTEERS!



It is a **requirement** of the Wake County Public School System that all classroom volunteers be REGISTERED with the school system. Even if you do not plan to volunteer in the classroom, but you think you might go on a field trip with your child, YOU NEED TO REGISTER. Last year there were parents who signed up to chaperone field trips, but had never registered with the school system. In those cases, parents showed up to go on the field trip, but had to be turned away.

How do you register to volunteer with WCPSS? It's simple, but **must be done at school**. You can sign up using the computers in the media center or in your child's classroom. Office staff or your child's teacher can assist you. Don't delay! It can take a week or two for Wake County to approve your registration. Please call the school office with any questions.



PTA Membership



JOIN PTA TODAY!

It's the start of another great school year & time to **join the PTA**. When you join the PTA it gives you voting privileges and a voice in the direction of our school. It does not require you to volunteer, though we have many opportunities available. A membership form was sent home in the PTA packet the first week of school. Please return it in your child's Monday folder along with your dues. If you need another form you can download it from our school website at <http://www.washingtones.wcpss.net> We will also have memberships available at the Parent Open House on Sept. 10th. An individual membership is just \$5.75. And this year Great Harvest bread is giving a certificate for a **free loaf of bread** when you join the PTA. Please contact Julie Zimmerman at juliez@nc.rr.com with any questions. THANK YOU for your support!

PTA Membership FAQs:

1. **Do I need to join again this year if I joined last year?** Yes, PTA membership is an annual membership that is good for just one school year.
2. **What is the difference between a silver membership and a gold membership?** A silver membership (\$10) is just two memberships. Often both parents of a child join the PTA. A gold membership (\$20) is good for up to four members. Grandparents, aunts, uncles sometimes like to join as well. If not all four memberships are desired the remaining donated money stays with the Washington PTA.
3. **Sometimes there is a lot of paper work the first few weeks of school. How can I remember if I joined or not?** Just look on the WashinGTon website under PTA membership to see the list of current members. Only names are included, not the membership level.

How can you help Washington Elementary and the PTA?

There are several event chair positions that remain unfilled: Courtyard and Grounds Committee and Vision Screening. If you are interested in heading up either of these committee or just to get more information about what they entail please contact Kay Brody, PTA President at kay.brody@gmail.com.

PTA Returned Check Policy

WashingTon's PTA policy is that check writers will be held responsible for any and all fines charged to the PTA for checks returned for any reason- including NSF's.



Wizard Wear Order Form



Last chance to order Tie-Dye t-shirts!

All order forms must be returned by **Friday, September 18th** to be delivered at Fall Picnic!

Tie-dye shirts tend to run small!

Tie-Dye T Shirts	Youth Small \$12.00	Youth Medium \$12.00	Youth Large \$12.00	Adult Small \$12.00	Adult Medium \$12.00	Adult Large \$12.00	Adult XL \$12.00	Adult 2XL \$13.00	Adult 3XL \$14.00
Pink									
Blue									
Green									
Orange									

Runs small! ***Please indicate if you want **New** print style as shown in example or **last chance** for Old print style (WashingTon Magnet Elementary)!

HOODIES 	Youth Medium \$17.00		Youth Large \$17.00		Adult Small \$17.00		Adult Medium \$17.00		Adult Large \$17.00		Adult XL \$17.00		Adult 2XL \$18.00		Adult 3XL \$19.00	
NAVY	New	Old	New	Old	New	Old	New	Old	New	Old	New	Old	New	Old	New	Old
GRAY	New	Old	New	Old	New	Old	New	Old	New	Old	New	Old	New	Old	New	Old

Fuller cut! Please note Width and Length in sizes below. ***Available in new style WASHINGTON print only!***

T Shirts 	Youth XSmall \$12 W: 16 L: 20.5	Youth Small \$12 W: 17 L: 22	Youth Medium \$12 W: 18 L: 23.5	Youth Large \$12 W: 19 L: 25	Youth XL \$12 W: 20 L: 26.5	Adult Small \$12 W: 18 L: 28	Adult Medium \$12 W: 20 L: 29	Adult Large \$12 W: 22 L: 30	Adult XL \$12 W: 24 L: 31	Adult 2XL \$13 W: 26 L: 32	Adult 3XL \$14 W: 28 L: 33
Blue											
Gray											
Pink											

WashingTon Car Magnet \$5.00

quantity: _____ x\$5 TOTAL \$ _____

WashingTon Wristbands \$3.00

quantity: _____ x\$3 TOTAL \$ _____

Total # shirts/Hoodies _____

Total Amount Enclosed \$ _____

Student's name _____

Teacher _____

Parent's name _____

Phone # _____

If you have any questions please contact Tonya Finney 608-8972 tfinney226@yahoo.com



SEPTEMBER

- T 1 PTA meeting 9:30 am
- M 7 Holiday
- Th 10 Open House and General PTA Mtg
- TBA Phantom Fundraiser Begins!
- Sa 19 Latino Picnic Ezra Poole Park
- W 23 Early Release

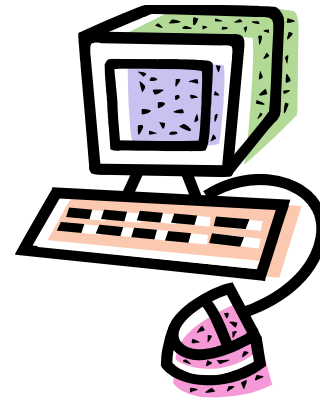
WASHINGTON WEBSITE

www.washingtones.wcpss.net/PTA help us keep you informed find details on programs and events as well as:

- ★ Options to contact PTA committees (contact pg)
- ★ Email updates on WPTA & school happenings (sign up for yahoo mail)
- ★ Online Newsletter (click on the Newsboy)

OCTOBER

- F 2 Fall Picnic
- T 6 PTA Meeting 9:30 am
- T 6 McTeacher's Night from 4-7 pm



For More Information, Contact...



PTA Office	Contact Name	Phone	Email Address
President	Kay Brody	462-1936	Kay.Brody@gmail.com
President-elect	Jennifer Carroll	326-3839	Carrolljs70@yahoo.com
Past President	Lynn Edmonds	859-5260	lsepta@nc.rr.com
Secretary	Vicki Hood	762-9882	vhood@carolina.rr.com
Treasurer	Pina Kantesaria	465-3195	prkantesaria@yahoo.com
2nd VP-Ways & Means	Julie Zimmerman	854-9300	juliez@nc.rr.com
3rd VP-Communications	Angela Sims	772-6689	aosims@yahoo.com
4th VP-Community Support	Laura Kay	342-5490	jkaylkay@hotmail.com
5th VP-Media Center	Bee Loo	772-6689	loobe@att.net
6th VP-Programs	Christy Flint	557-8312	Christy.flint@gmail.com
7th VP-School Support	(OPEN)		
School Administration	Contact Name	Phone	Email Address
School Principal	Peggy Beasley-Rodgers	856-7960	PBEASLEY-RODGERS@wcpss.net
Assistant Principal	Becky Viersen	856-7960	rviersen@wcpss.net
Faculty Rep/Elective Information	Jan Kidwell	856-7960	jkidwell@wcpss.net