



# The Washington News

Washington GT Magnet Elementary School ♦ 1000 Fayetteville Street ♦ Raleigh, NC 27601 ♦ 919-856-7960

September 2008 Edition

## From your PTA Leadership

Welcome to the 2008-2009 school year at WashinGTon! We are excited about working with all of you this year to support our students and staff. First things first: we need you in PTA! Please join PTA as soon as possible. You will find more membership information in this newsletter and the Rainbow Packet. Our Rainbow Packet has all the information you need to get involved with our wonderful PTA: our mission statement, contact information, membership form, volunteer opportunities and more. If your questions aren't answered in that packet, please don't hesitate to contact us. We are delighted you're here and want to help you find a way to be involved. There are MANY opportunities to be involved no matter how much time you can give. We have a need for volunteers who can only offer one hour during the whole school year, or several hours per week. We welcome and value any time you may have.

Finally, we would like to invite you to attend our monthly PTA board meetings. EVERYONE is invited whether you serve on a PTA committee or not, whether you have volunteered before or not. Attending these meetings is a great way to learn about our PTA and our school, meet parents and discover a variety of ways to be involved. We meet the first Tuesday of every month at 9:30am here at school. (Location varies, so check with us or the office.)

We look forward to seeing you there!

**Lynn Edmonds, PTA President**  
lsept@nc.rr.com (859-5260)

**Kay Brody, PTA President-Elect**  
Kay.brody@gmail.com (462-1936)

### Newsletter Information

Would you like to see your information printed in the October 7th edition of the newsletter? Just send your articles/pictures by **September 25** to Ann Overton aoverton@aoassociates.net. Editing for space/content may occur. Thanks for contributing!



## PTA BREAKING NEWS

### All Visitors to the school must sign in!

You must sign in at the office when visiting school for any reason. Office staff can assist you with a visitor's pass or volunteer's pass. You need to get permission from teachers to visit classrooms. Thank you!

### Wizard Wear for Sale!

Find your school spirit clothes on sale at upcoming events such as Open House and Fall Picnic. We are ordering limited quantities to fill certain sizes and colors, so get yours soon! Look for the Wizard Wear form in your PTA Rainbow Packet or on our website at <http://washingtones.wcpss.net/PTA>

### Wizardinfo Yahoo Group!

Have you heard about Washington's Yahoo Group called "Wizardinfo"? This is a great way to receive information from the PTA between newsletters. Go to our website: <http://washingtones.wcpss.net/PTA> and look for the link: "Sign up for the PTA Yahoo Group".

### Inside this issue:

Fall Events	2
Phantom Fundraiser	3
Weekly Readers	4
Media Center Volunteers	4
Going Green!	4
Character Education	5
The Reading Bug	5
Ready To Learn Center	6
Drink Pouch Brigade	6
PTA Membership	7
Calendar & Contacts	8

### **WCPSS VOLUNTEER POLICY**

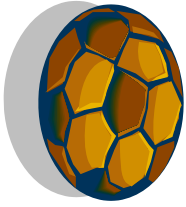
In order to volunteer in Wake County Public Schools, you must register with the school system. This includes volunteering in your child's classroom, for field trips and school events. If you have not registered and plan to volunteer at Washington this year, you will need to go to the computers in our media center and ask for assistance with the "volunteer registration". Depending on the volunteer level, you may be asked for your Social Security number and your driver's license number. Please contact the school office with any questions.



# Fall Events



## SPIRIT NIGHT! at Dream Sports Center in Apex!\*



**SATURDAY, SEPTEMBER 20th  
6:30pm - 9:30pm**

1016 Investment Blvd,  
Apex, NC 27502

(919) 387-2955

[www.dreamsportscenter.com](http://www.dreamsportscenter.com)

Washington Elementary has teamed up with Dream Sports Center to offer our families a private, supervised, fun-filled night of games and activities. Although welcome, parents may drop off their kids and their friends for skating, soccer, and basketball. Cost is \$5 per participant. Skate rentals are included, but you may want to bring your own if you have them to avoid having to wait for a popular size. This is sure to be a fun start to a great school year!

If you have any questions feel free to contact Cheryl Rodgers at [crodgers@nc.rr.com](mailto:crodgers@nc.rr.com).

*\*Please note that if you participated in this event last year that this is a new location.*

## Open House

**THURSDAY, SEPTEMBER 18<sup>th</sup>**

**3<sup>rd</sup>- 5<sup>th</sup> grade 6:00-7:15pm**

**K-2<sup>nd</sup> grade 7:30-8:45pm**

This very important evening is your chance to hear from your child's teacher about what they will be doing in classrooms this year! We start at 6:00 with only the 3<sup>rd</sup>-5<sup>th</sup> grades. Come to the cafeteria for instructions and a BRIEF PTA meeting, where we will vote on the 2008-2009 PTA budget. Parents will then go to classrooms and hear from teachers. We wrap up promptly at 7:15 so that grades K-2<sup>nd</sup> can come in. Parents of K-2<sup>nd</sup> need to report to the cafeteria at 7:30 for instructions and to attend the same, BRIEF PTA meeting. A reminder will be sent home the week of Open House. Questions? Call the school office at 856-7960.

## WashingTon's Fall Picnic



**FRIDAY, OCTOBER 3rd (rain or shine)  
5-7 pm**

Every year, Washington PTA organizes an evening picnic during which the children can play with their friends (old and new) and the adults (parents and staff) can relax and socialize. This year's picnic will be held rain or shine on Friday, October 3rd from 5 to 7 pm. Information about how to volunteer at this event and what to bring to the picnic will go home in Monday folders in few weeks.

## Book Fair

**November 17th through November 21st**

Go on a Fun Safari for Books! The Book Fair provides a wonderful opportunity for students to take a Lion's leap into reading and shop for their own books.

As part of the book fair, WES will be participating in **One For Books** where all money collected goes directly to purchasing more books for our school.

The Book Fair will be open on Family Science and Math Night so Parents can shop too! More information will be coming soon!

**Volunteers are needed to help staff the book fair.** For more information, feel free to contact Ann Overton at [ako470@nc.rr.com](mailto:ako470@nc.rr.com) or 662-2596.

## Washington Family Science and Math Night

**THURSDAY, NOVEMBER 20th**

**5:30-8:30 PM**

Come enjoy pizza, learn more about science and math, and have a great time!

Explore and learn more about science and math at this special night for Washington families. Students and parents will have two hours to visit many different classrooms with exciting hands-on science and math activities with presentations. We need volunteers to sell pizza and to assist presenters throughout the night. Please call or e-mail Lynn Lang at 858-7118 or [lynnlang@nc.rr.com](mailto:lynnlang@nc.rr.com).

## Washington PTA's 11<sup>th</sup> Annual Phantom Fundraiser

In 1997 Washington parents decided they wanted to support the students and staff at Washington Elementary without raising money through sales-based fundraisers that yielded low returns. They wanted a fundraiser that didn't involve sending their children out to sell overpriced products to complete strangers or reluctant relatives. Enter Washington's Phantom Fundraiser.

For ten years, 100% of contributions made to Washington's Phantom Fundraiser have gone directly to Washington Elementary PTA in the form of money and corporate matching grants\*. Due to the success of this unique fundraiser, instead of constantly bombarding parents and students with fundraising schemes, the PTA has been able to focus on bringing cultural performances to the students, supplying classrooms with important learning materials and equipment and providing support and grants for school faculty.

Our goal for the 11<sup>th</sup> annual Phantom Fundraiser is to raise \$18,000. This amount, when added to Passive Fundraising programs such as Box Tops and grocery store rewards

cards, will comfortably fund this year's budget and allow us to provide quality programs such as Teacher Start-up Funds, Weekly Readers and several cultural arts performances, as well as educational events such as Family Math and Science Night, Science Fair and Field Day. With just over 575 students at Washington, if the average donation made per student is \$32, we will meet our goal with flying colors—and won't have to go in search of a spring fundraiser!

On Monday, September 22 you will receive details about how you, your friends, your family and even your employer\* can participate in this year's Phantom Fundraiser. Let's get the money taken care of now so that we can enjoy our time together at Washington!

*\* Many employers will match their employees' donations. Washington Elementary parents and other family members employed at Progress Energy, GlaxoSmithKline, BD, Cisco, Tyco, Oracle Corporation and Qualcomm helped to raise approximately \$600 in additional money for last year's Phantom Fundraiser. To find out if your employer participates in a matching grant program, talk to your Human Resources department or review our list of Employer Programs at <http://washingtomes.wcpss.net/PTA/passivematching.html>.*

If you have any questions or would like more information, please contact Christy Flint at 557-8312 or [christy.flint@gmail.com](mailto:christy.flint@gmail.com)

---

### WHICH CLASS CAN EARN THE MOST MONEY FOR WASHINGTON ?

Every year we remind you to "Send in your BoxTops" and "Save your Milk caps" and "LINK YOUR CARDS". This year, for the WHOLE YEAR, I will be keeping track of which class sends in the most Box-Tops, Labels and Milk caps and periodically update you on the monetary "standings". Remember to get credit for your class you MUST LABEL THE BAG WITH YOUR TEACHER'S NAME. If you have more than one student, put ALL TEACHERS' NAMES and I will divide up the donations. Let's make this year the best ever for Passive Fundraising. Earning money for WashinGTon without spending anything extra!

### Link Your Shopping Cards to Earn Money for Washington!

Every time you go to the grocery store you COULD be earning "FREE MONEY" for WashinGTon. But if you haven't linked your shopper's card, we are missing out. Thanks to all the early birds who linked their Harris Teeter cards in August. 28 shoppers have already earned us over \$15!

Here's what you need to do:

- **FOOD LION** - MUST BE LINKED ONLINE and we MUST HAVE 25 LINKED CARDS in order to receive any earnings! Go to [www.foodlion.com](http://www.foodlion.com) and click on the Lion's Shop and Share link to select Washington as your charity.
- **HARRIS TEETER** - Go to the store or on-line to [www.harristeeter.com](http://www.harristeeter.com) and select the Together in Education Program link. Our school's number is 2308.
- **KROGER** - In the PTA rainbow packet, take the Kroger bar code to your nearest Kroger to link your card to Washington.
- **TARGET** - At the store, or on-line at [www.target.com](http://www.target.com) under Take Charge of Education, link to Washington's number 81104.

## Weekly Readers



### Volunteer with Weekly Readers!

The Weekly Reader committee is looking for volunteers who can offer  $\frac{1}{2}$  hour per week to read with a 1<sup>st</sup> or 2<sup>nd</sup> grader. All training and materials will be provided! Look for the Weekly Readers flyer and sign up to help. You can truly make a difference in the life of a young reader! Contact Sarah Capel at 781-0981 or [capelfamily@bellsouth.net](mailto:capelfamily@bellsouth.net)

## Media Center Volunteers Needed!



**Where** will your child read a magazine, hear a story, research an animal, study an author, visit curriculum-relevant websites, enjoy the school play, hear a band concert, learn about book genres, take an elective, and check out a library book?

**Where** do Washington parents have committee meetings, read *Our State* magazine, check their e-mail, relax before a conference, hear their child's orchestra concert, applaud the Science Fair winners, enjoy the school play, and congratulate 5<sup>th</sup> grade DARE graduates?

**Where** do Washington teachers find resources, send small study groups, schedule events too big for the classroom, host baby showers, read professional journals, bring their classes for research and instruction, enjoy the school play, surf the internet, and visit with colleagues?

If your answer to all four questions was the **Washington Media Center Library** you are correct! Our media center is a whole lot more than just shelves of books. Our Media Specialists stay busy teaching electives, developing students' research skills, encouraging students to sample new genres, entertaining and educating with "storytime" presentations for the younger students, and ordering and processing books, equipment, and materials for students and staff.

**Your help is needed!** If you'd like to be a part of this vital center of school activity, please sign up to be a Media Center Volunteer. Students love to come to the library with their class and find Mom (or Dad!) "in charge" at the circulation desk! Please sign up on the PTA website, or leave a message for Kim Bruff in the Media Center at 856-7987 or at home at 553-6925. **Thank you!**

## BIG CHANGE: PTA NEWSLETTER IS GOING GREEN!!!!

In an effort to save lots of paper, time and money, PTA will no longer distribute paper copies of the newsletter unless you request one. Beginning in October, a publication notice will be sent home to all families in Monday folders. We encourage you to print your own copy. If you prefer a paper copy be sent home to you, you **MUST** request that. Anyone who requests a paper copy will receive the newsletter in that form every month, unless otherwise noted. We want to make every effort to distribute our newsletter to ALL families, yet in a more environmentally and fiscally responsible way. Please contact Ann Overton, newsletter editor, to request paper copies: [aoverton@aoassociates.net](mailto:aoverton@aoassociates.net) or 662-2596. Questions about this new policy? Contact Lynn Edmonds, PTA President, at [lsept@nc.rr.com](mailto:lsept@nc.rr.com) or 859-5260.



## Character Education



### HOW DO YOU SHOW GOOD CHARACTER?

We want to know! Washington students have the opportunity to earn rewards through the Character Rewards program when they show their good character. Look for details of the program to come home soon! There's a new charm design for this year. Also new...three collection boxes located throughout the school- in front of the office, in the kindergarten hallway, and outside the cafeteria.

Does your child like to write? He/she may submit an original poem, short story, or essay related to the character trait of the month. Select submissions may be included in the PTA newsletter or highlighted on the website. Place submissions in the collection box with your Rewards form, and be sure to include first and last names and teacher name.

For more information please contact Jennifer Wakeford at 387-8024 or [jswakeford@yahoo.com](mailto:jswakeford@yahoo.com)

### THE CHARACTER TRAIT FOR SEPTEMBER IS... RESPONSIBILITY!

**RESPONSIBILITY** means being dependable, reliable, and accountable. Responsible people...

- ★ Take care of their belongings
- ★ Do chores on time without reminders
- ★ Complete assignments on time
- ★ Keep promises
- ★ Accept the consequences of their actions

Parents, talk with your child about RESPONSIBILITY. Watch a movie together or read a book about a character who shows RESPONSIBILITY (or about one who *doesn't* and faces the consequences).

Next month, we will print some of the examples of RESPONSIBILITY that we receive.



## The Reading Bug



### CATCH THE READING BUG WITH US!

We're excited to embark on our second year of the **Book Adventure** and **Books and Beyond** reading programs. These

PTA sponsored programs are designed to encourage a love of reading in students of all ages.

Students in kindergarten and first grade participate in **Books and Beyond**. The goal of the program is to expose young readers to more books and encourage them to read as much as possible. They may read books from the Media Center, the public library, home, or anywhere else books can be found. Students keep track of what they've read (and what's been read to them) on reading logs, and their progress is tracked on the Media Center bulletin board. They also receive incentives at regular intervals. **In order for this program to run smoothly, we need at least one volunteer for every K-1 classroom. Please consider helping when your child's teacher or Room Parent asks.** The program is set to start on Monday, October 13<sup>th</sup>. More detailed information will be sent home to K-1 parents about a week before the start date. This year's theme is a con-

tinuation of the summer reading theme, "Catch the Reading Bug." Check out the bulletin board at Open House and find out which bug your child will be!

Students in 2<sup>nd</sup> through 5<sup>th</sup> grades participate in the **Book Adventure** program. **Book Adventure** is a free program available on the Internet. Students can use the online **Bookfinder** to identify suggested book titles based on their reading level and subject interest. After they've read a book, they take a comprehension quiz to earn points. Students may use their points for rewards available through the website. In addition, the PTA awards incentives at the end of each quarter for students who meet posted point goals. Points redeemed online DO NOT affect the cumulative points a student has earned for school incentives. Student training sessions will be held in the coming weeks, and students may begin to accumulate points toward school goals when this year's program officially begins on September 23<sup>rd</sup>.

Look for more details on both of these reading incentive programs to be posted on the Washington website soon!

For more information or to volunteer please contact Jennifer Wakeford at 387-8024 or [jswakeford@yahoo.com](mailto:jswakeford@yahoo.com)



## READY TO LEARN ANNOUNCEMENTS

September

Fall Class Schedule - Come Join Us  
Starting September 8, 2008

Central Region Classes at Washington Elementary School

---

### Monday

9:00 am - **Social Tots**

10:00 am - **Alpha Wizards** Creative Play (ages 3-5)

---

### Wednesday

10:30 am - **Wiggle Wizards** Music & Movement (Toddlers)

2:45 pm - Kindergarten Pullout

---

### Friday

10:00 am - **Infant Development** (*Only on the 2<sup>nd</sup> Friday of each month*)

---

Other classes are available in the Central Region at Bugg Elementary, Poe Elementary, and Cedar Moor Apartments. Please call 508-0819 for information and registration.

When kids come to class please check-out our new pre-school computer programs during social tots or free play time.

Call **Sabrina Winstead** at 508-0819 or **Beth Honeycutt** 212-0506 for more information.

**We are now Online!** Please visit our page web for more information about the Ready to Learn Center at

<http://washingtones.wcpss.net/rtl/rtl1.htm>

or by going to the Washington Elementary Homepage and clicking on the Ready to Learn Link on the Left side.

## It's Easy Being Green with the Drink Pouch Brigade!



Do you love the convenience of juice pouches but wonder where they go once they're used? It's probably no surprise to learn that they don't degrade. Our conservative estimate (based on each student using one pouch a week) is that our school is contributing 21,600 pouches to landfills every year! When you consider snacks, lunches, "Fun Fridays," and field trips, our kids probably use *a lot* more than that! The good news is we've discovered a program that recycles drink pouches...and gives the school money! Each Caprisun, Honest Kids, or Kool-Aid pouch is worth 2¢ and any other brand is worth 1¢. This may not sound like much, but when you multiply it by the number of pouches we use, it could easily add up to over \$400. And the benefit to the Earth is immeasurable!

This school year, a collection box will be placed in the cafeteria for juice pouches. **We need volunteers to take pouches home each weekend and prepare them for shipping.** (Pick a regular Friday each month, or choose a month and do all the Fridays in that month). Please note that the program recycles pouches only, **NOT JUICE BOXES**. If you eat lunch with your child, this is an easy way to help the PTA and the Earth at the same time. To volunteer, please contact Jennifer Wakeford at 387-8024 or [jswakeford@yahoo.com](mailto:jswakeford@yahoo.com). The PTA thanks you, and the Earth thanks you!



## JOIN PTA TODAY!

Help us meet our 100% PTA Membership goal by joining today. Membership forms are located in the rainbow packet and on the school website. An individual membership is just \$5.00. Both parents can join for \$10 (Silver Level) or a \$20 (Gold Level) is also available. Extended family members (aunts, uncles, grandparents) are welcome to join too. From each membership \$1.75 goes to the National PTA and \$1.00 goes to the North Carolina PTA. The rest stays here at Washington to help support our many programs and activities. Membership cards will be distributed at the Open House on Sept. 18th. If you are unable to attend a card will be sent to you in your child's Monday folder. To verify your membership has been processed please check the members list on the school website under PTA Membership. Contact Julie Zimmerman, PTA Membership Chair ([juliez@nc.rr.com](mailto:juliez@nc.rr.com)) with any questions. Remember, joining does not require you to volunteer, but it does give you voting privileges, allows you to hold a PTA office, and gives you the power to influence the direction of PTA activities in our school. Thank you for supporting Washington PTA.

## PTA Membership FAQs:

1. **Do I need to join again this year if I joined last year?** Yes, PTA membership is an annual membership that is good for just one school year.
2. **What is the difference between a silver membership and a gold membership?** A silver membership (\$10) is just two memberships. Often both parents of a child join the PTA. A gold membership (\$20) is good for up to four members. Grandparents, aunts, uncles sometimes like to join as well. If not all four memberships are desired the remaining donated money stays with the Washington PTA.
3. **Sometimes there is a lot of paper work the first few weeks of school. How can I remember if I joined or not?** Just look on the WashinGTon website under PTA membership to see the list of current members. Only names are included, not the membership level.

---

## PTA Returned Check Policy

WashinGTon's PTA policy is that check writers will be held responsible for any and all fines charged to the PTA for checks returned for any reason- including NSF's.

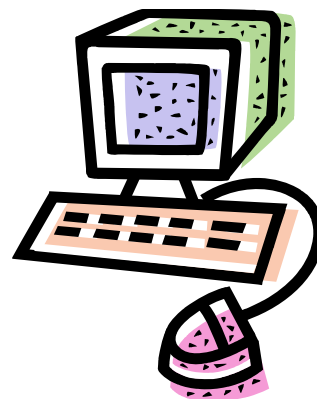
## SEPTEMBER

- M 1 Holiday
- T 2 9:30 am PTA meeting
- Th 18 6:00-7:15pm  
3<sup>rd</sup>-5<sup>th</sup> Grade Open House and  
General PTA meeting
- Th 18 7:30-8:45pm  
K-2<sup>nd</sup> Grade Open House and  
General PTA meeting
- Th 18 PHANTOM Fundraiser Begins!
- Sa 20 7pm-9pm Spirit Night, Dreamsports
- Th 25 Early Release

## WASHINGTON WEBSITE

[www.washingtontes.wcpss.net/PTA](http://www.washingtontes.wcpss.net/PTA) help us keep you informed find details on programs and events as well as:

- ★ Options to contact PTA committees (contact pg)
- ★ Email updates on WPTA & school happenings (sign up for yahoo mail)
- ★ Online Newsletter (click on the Newsboy)



## OCTOBER

- F 3 Fall Picnic RAIN or SHINE 5pm
- T 7 9:30 am PTA meeting
- F 10 Teacher Workday
- Th 16 Early Release
- TBD McTeacher's Night
- F 31 Phantom Fundraiser Ends!

## For More Information, Contact...

PTA Office	Contact Name	Phone	Email Address
President	Lynn Edmonds	859-5260	<a href="mailto:lsepta@nc.rr.com">lsepta@nc.rr.com</a>
President-elect	Kay Brody	462-1936	<a href="mailto:Kay.Brody@gmail.com">Kay.Brody@gmail.com</a>
Past President	Helen DeFazio	362-0510	<a href="mailto:hdefazio@earthlink.net">hdefazio@earthlink.net</a>
Secretary	Jennifer Wakeford	387-8024	<a href="mailto:jswakeford@yahoo.com">jswakeford@yahoo.com</a>
Treasurer	Carolyn Waldrup		<a href="mailto:cadawald@yahoo.com">cadawald@yahoo.com</a>
2nd VP-Ways & Means	Christy Flint	557-8312	<a href="mailto:christy.flint@gmail.com">christy.flint@gmail.com</a>
3rd VP-Communication & Recogni-	Laura Kay	388-0294	<a href="mailto:jkaylkay@hotmail.com">jkaylkay@hotmail.com</a>
4th VP-Community Support	Barb Campbell	363-3478	<a href="mailto:barbcampbell@nc.rr.com">barbcampbell@nc.rr.com</a>
5th VP-Media Center	Angela Sims	772-6689	<a href="mailto:aosims@yahoo.com">aosims@yahoo.com</a>
6th VP-Programs	(Position Open)		
7th VP-School Support	Dorothy Roche		<a href="mailto:dwroche@bellsouth.net">dwroche@bellsouth.net</a>
School Administration	Contact Name	Phone	Email Address
School Principal	Peggy Beasley-Rodgers	856-7960	PBEASLEY-RODGERS@wcpss.net
Assistant Principal	Becky Viersen	856-7960	rviersen@wcpss.net
Faculty Rep/Elective Information	Jan Kidwell	856-7960	jkidwell@wcpss.net